

*Welcome to the September edition of the LS<sup>2</sup> newsletter!*

## **NEWS FROM THE OFFICE**

### **LS<sup>2</sup> INTERNSHIP**

**LS<sup>2</sup> is looking for a 6 month intern from 1.January 2016 !**

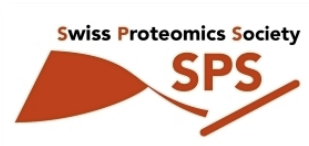
The main task of the intern is to implement the new website of LS<sup>2</sup>. Further tasks include the help with general communication tasks, such as creating the newsletter, updating the website, etc. The intern will also have the opportunity to represent our society towards the public, at several life science meetings taking place in Switzerland. Additionally, he/she will gain experience in event management before and at the LS<sup>2</sup> Annual Meeting 2016, taking place from 15-16. February 2016 in Lausanne.

Candidates must have a background in a life sciences-related discipline, have an interest in communication tasks, web design and event management, and must speak English and/or French fluently. We are looking forward to promising candidates. Please send your application to [anna.brandenburg@ls2.ch](mailto:anna.brandenburg@ls2.ch) and you will hear back from us soon.

### **TRAVEL GRANTS**

If you would like to attend « the » conference in your field, but your lab does not have the means to support you financially, a travel grant from your society can help you realise this great opportunity. Travel awards will pay the trip and accomodation up to a certain amount and will provide you the opportunity to present your research to an international audience featuring experts in your domain, to learn about their recent findings and to expand your professional network.

For rules and guidelines on how to receive travel awards, please visit the website of your society.



### **FEBS LONG-TERM FELLOWSHIPS**

FEBS Long-Term Fellowships are awarded to support long-term visits for the purpose of scientific collaboration or advanced training. These Fellowships are originally granted for one year and may be renewed for a further year up to a maximum of three years. Applicants must have a PhD and should normally be scientists with no more than three years of post-doctoral experience. In addition, applicants need to be members of a [FEBS Constituent Society](#), to be working in a laboratory in a FEBS country and to be seeking to work in a laboratory in a different FEBS country. Long-Term Fellowships are currently awarded once a year. Applications should be made before **October 1st** of the corresponding year via the online application system at [fellowships.febs.org](http://fellowships.febs.org). For the 1 October 2015 call, the system will open for registrations in July 2015.

# UPCOMING MEETINGS

## LS<sup>2</sup> ANNUAL MEETING 2016

15-16. February 2016

University of Lausanne Amphimax/Amphipôle

### Interdisciplinary Sciences

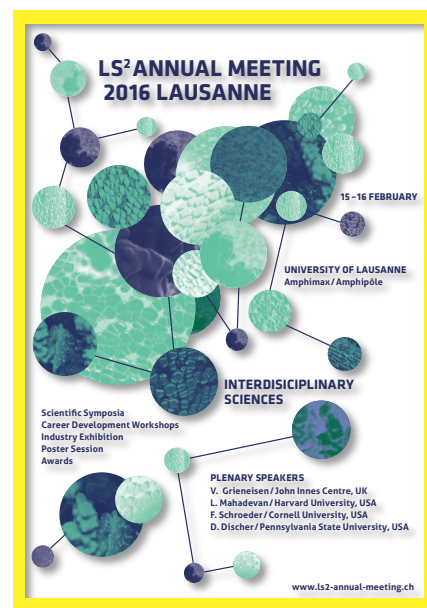
We are pleased to announce the next edition of the LS<sup>2</sup> Annual Meeting themed “Interdisciplinary Sciences”!

The website is now online and the **registration is open**: <http://ls2-annual-meeting.ch>, so please submit your abstract via our online submission system and chances are that you are selected for a talk in one of the symposia! As every year, the best posters will be awarded 500 CHF.

We are looking forward to two exciting days filled with interdisciplinary approaches to the diverse disciplines in the life sciences, scientific symposia are ranging from Molecular and Cellular Biology (model systems), over plant molecular and chemical biology to Microbiology, Neurosciences, Stem Cell Research, Physiology, Proteomics, Lab Animal Experimentation, Pharmacology, Chemical Biology to Synthetic Biology in collaboration with the SCNAT! More information on the latter can be found [here](#). The four plenary speakers will cover interdisciplinary aspects of the life sciences including biophysics (**L. Mahadevan**, Harvard University, **D. Discher**, University of Pennsylvania), “metabolomics” (**F. Schroeder**, Cornell University) and Systems Plant Biology (**V. Grieneisen**)...so be prepared for a diverse and exciting program offering something to everyone. Furthermore, we organize a series of **career development** and **educational programs**, such as *MSc- what's next?* An interactive session tailored to master students taking their next career step. The popular “*Careers of women and men in Science*” discussion round will be held in a new format, and we are welcoming a range of scientists who have pursued a career outside academia (“*Non-academic careers in Science*”) to present and chat about their career path. In the session “*PI of tomorrow- the future of Swiss research*” we are searching the most promising candidate who wants to kickstart his/her career by founding an own lab in a Swiss research institutions. Applications for this competition can be sent to [anna.brandenburg@ls2.ch](mailto:anna.brandenburg@ls2.ch). Please look at our website for further information. One of the highlights of the career and educational program will be the session “Challenges and opportunities of research funding in Switzerland and Europe” with contributions from **Mauro Dell’Ambrogio** (SERI) and **Aysim Yilmaz** (SNF). Mauro dell’ Ambrogio is the head of the Swiss State secretariat for Education, Research and Innovation, that takes he most important decisions on how research funds are distributed in Switzerland. There will be a long Q&A session following their talks so please bring your most urgent questions regarding the funding situation in Switzerland and Europe. The social highlight will be the **networking apéro** on the evening of the 15<sup>th</sup> February, where you can re-connect with the other participants of the meeting and present your poster!

Please note that poster sessions will now be divided (lunch day one: even numbers, lunch day 2: odd numbers), so that you also have the opportunity to go and see the posters of your colleagues. You also have the chance to “promote” your poster by sending me a **visual abstract** (pdf/ppt) which will be displayed on large screens during lunch and all other breaks.

A large **industry exhibition** will offer you insight into the most recent developments from your favorite life science company. Please use this opportunity to gather information about the newest product or service on the market and get 1-to-1 instructions from our industry partners. The exhibition plan can be found online. Last but not least: a **photo competition** has been launched by **Nikon** and LS<sup>2</sup>: the best photos will be printed and displayed near the Nikon booth (no. 25). All visitors of the Nikon booth can select the best photography amongst the displayed images and participate in the poll. To enter the competition, please send your best photo (topic: interdisciplinary sciences) with a little description of what is pictured to [anna.brandenburg@ls2.ch](mailto:anna.brandenburg@ls2.ch). The winner will receive a brand-new fancy Nikon camera!



---

## **DNF UNIL LEÇON INAUGURALE : LE SOMMEIL, SOURCE DE RÊVES SCIENTIFIQUES**

*11. September 2015, 16h00 au Grand Auditoire du Bugnon 9*

Anita Lüthi, associate professor in the Department of Fundamental Neurosciences at the University of Lausanne, will hold her inaugural lecture on Friday, September 11, 2015 at 16:00 in the Grand Auditorium du Bugnon 9.

Sleep is a fundamental principle of our mental and physical well-being, of our ability to learn and remember and stability of our emotional life. If it is known that the lack of sleep has important consequences for our health and our cognitive functions, biological processes that underlie to our sleep quality and their recovery effects, are still largely unknown. Understanding the neuronal basis of sleep and the causes of brain sensitivity due to lack of sleep is essential to the diagnosis and treatment of sleep disorders. ([read more](#))

<http://www.unil.ch/getactu/wwwfbm/1439793989961/>

---

## **BASEL LIFE SCIENCE WEEK**

*21-24 September 2015, Congress Center Basel, Switzerland*

The Basel Life Science Week and MipTec 2015 Life Science Exhibition features keynote speakers such as Jean-Paul Clozel (CEO and Co-funder Actelion), Peter Thiel, John Ried and Kushru Asadullah. You can participate in numerous workshops and events on career coaching, and check out more than 250 posters. The scientific forums are dedicated to aging and drug discover, digital health and care, drug discovery sciences, GPCR, infectious diseases, jumpstarting innovation, medicinal chemistry, next generation sequencing, peptide therapeutics, signaling and drug resistance in cancer, stem cells in biomedicine, synergy and translational medicine.

More info under <http://www.basel-life-science-week.eu/2015/forums.html>



---

## **3RD SWISS IMAGE-BASED SCREENING CONFERENCE (SIBS 2015)**

*30. September-1.October 2015, Novartis Learning Centre Horburg, Basel, Switzerland*

This international conference brings together leading experts in the field of cell-based assays using automated microscopy and image analysis with a particular focus on the fast evolving field of High Content Screening and single cell analysis for drug discovery, chemical biology and systems biology applications. The presentations will focus on the innovative aspects of cell-based assay design and their further development into screens.

Registration deadline : **4 September 2015** : <https://www.sibs2015.ethz.ch/>

---

## **TEDD ANNUAL MEETING**

*22. October 2015, Wädenswil, Switzerland*

The topic of the symposium this time is “**Moving 3D cell cultures from bench to practice**”. There will be two sessions: one on basic science and clinical research, and the second one on applications with speakers from industry. Please see the following website for more info [program](#)

---

---

## **BioALPS NETWORKING DAY**



*28. October 2015, Swisstech Convention Center Lausanne, Switzerland*

Proteins and Peptides : from the dishplate to Pharma

Session 1 : Proteins and peptides: context and perspectives

Session 2 : Proteins and peptides: Molecules of Life

Session 3 : The future of proteins and peptides in Health and Medicine

[Bioalps Networking Day - Program](#)

---

## **INTERNATIONAL SYMPOSIUM ON CHEMICAL BIOLOGY 2016**



*13-15 January 2016, Campus Biotech Geneva, Switzerland*

The [NCCR Chemical Biology](#) is organising the [2016 International Symposium on Chemical Biology](#) to be held from January 13-15, 2016. This international meeting of high scientific calibre will bring together world-leading experts from several disciplines under the broad subject of Chemical Biology to highlight the latest advances within the field. The diverse subject scope of the Symposium will provide a sound overview of some of the key challenges within cutting edge areas of Chemical Biology and foster an open and dynamic dialogue with many opportunities for networking

# COURSES AND WORKSHOPS

---

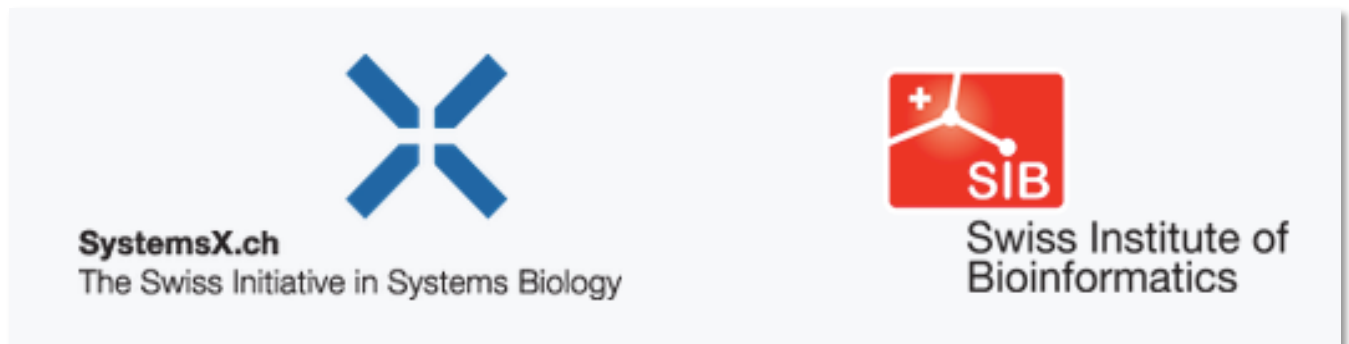
## **SYSTEMS MODELING AUTUMN SCHOOL**

*08-12 November 2015, Hotel- und Bildungszentrum Matt, Schwarzenberg, Switzerland*

[SystemsX.ch](http://SystemsX.ch) and the SIB will jointly organize an Autumn School from **08-12 November 2015**, in the Swiss Alps. The school is entitled “**Systems Modeling workshop**” young researchers are trained in cutting-edge modeling methodologies relevant to systems biology and bioinformatics. Over the course of the week, participants will learn how to model and simulate:

- metabolic networks
- gene regulatory networks
- population genetics/genomics models

SystemsX and SIB aims to offer you an eminently practical modeling course, with introductory theoretical lectures on different topics followed by hands-on modeling sessions, each of them with a different modeling methodology. The workshop is going to take place in the **Hotel und Bildungszentrum Matt**, Schwarzenberg, Switzerland. The course page, as well as the link for application, can be found at <http://edu.isb-sib.ch/course/view.php?id=213>.



...Job opportunities following...



# ***JOB OPPORTUNITIES***

---

If you have a job opening at your institute, please contact [info@ls2.ch](mailto:info@ls2.ch)!

## ***POSTDOC OPPORTUNITY***

### **TREISMAN LAB**

[Richard.Treisman@crick.ac.uk](mailto:Richard.Treisman@crick.ac.uk)

<http://www.crick.ac.uk/research/a-z-researchers/researchers-t-u/richard-treisman/>

Applications: full CV and references by 14 September 2015 please

Enquiries to Assistant: [Lucy.Davinson@crick.ac.uk](mailto:Lucy.Davinson@crick.ac.uk)

Work in the **Signalling and Transcription** group focusses on the transcriptional targets of Rho and Ras signalling, two major signalling pathways involved in oncogenic transformation, invasion and metastasis. Our main interest is in the transcription factor SRF and its two cofactor families, the TCFs and the MRTFs, which are regulated by Ras-ERK and Rho-actin signalling respectively (see Posern et al, 2006). We use a multidisciplinary approach, involving the biochemistry, structural biology, cell biology and genomics, applied to both tissue culture and mouse cancer and immune models.

---

## ***PHD POSITION***

### **DREWS LAB**

The group Animal Physiology at the Institute of Agricultural Sciences of ETH Zürich has an opening for 2 fully funded doctoral positions.

#### **Research project “Regulation of diapause in the Roe deer”**

The application should include a letter of motivation and a CV. For further information please contact Dr. med.vet Barbara Drews ([Barbara.drews@usys.ethz.ch](mailto:Barbara.drews@usys.ethz.ch)).

---

## ***POSTDOC OPPORTUNITY***

### **VAN NIMWEGEN LAB**

Research Project “Computational genomics/gene regulatory networks”

A postdoctoral position is available in the group of Erik van Nimwegen at the Biozentrum of the University of Basel and the Swiss Institute of Bioinformatics. Requirements are strong mathematical and computational skills and ability to perform theoretical research in computational genomics, genome-wide regulatory networks and stochastic gene regulation in single cells.

To apply, a single pdf with application letter, CV and names of two references has to be sent to

[Erik.vannimwegen@unibas.ch](mailto:Erik.vannimwegen@unibas.ch)

---

---

## ***POSTDOC OPPORTUNITY***

### **CORREIA LAB**

Project “Protein Design & Immunoengineering”

The newly established Laboratory of Protein Design & Immunoengineering (LPDI) at the École Polytechnique Fédérale de Lausanne (EPFL) is seeking for talented, motivated and passionate individuals to join our efforts in a number of leading-edge research areas. The research at the LPDI focuses on the development of experimental and computational techniques to design proteins with therapeutic and biotechnological applications. Particular emphasis is given, but not limited, to the areas of vaccine design, antibody engineering and protein-protein interaction inhibitors. For further enquires or to submit a job application please send your CV, a short motivation letter and contact details for 2 referees to [bruno.correia@epfl.ch](mailto:bruno.correia@epfl.ch)

---

## ***PROFESSORSHIP IN METABOLISM***

The Faculty of Life Sciences of the Swiss Federal Institute of Technology Lausanne (EPFL) invites applications for a Professor position in the general field of **Metabolism in the context of Nutrition, human health and disease**. This search is part of an initiative to promote research in the fields of metabolism, nutrition and food. We are primarily seeking candidates for a full professor position but in exceptional cases more junior candidates will be considered.

Enquiries: **Prof. Gisou van der Goot** [GHI-recruit@epfl.ch](mailto:GHI-recruit@epfl.ch)

---

## ***POSTDOC OPPORTUNITY***

### **MÜLLER LAB**

Project “A One Health Approach to unravel novel Genes and Molecular Pathways in Dermatology”

The SNF Singergia Project “A One Health Approach to unravel novel Genes and Molecular Pathways in Dermatology” situated at the University of Bern offers a postdoc position for a motivated candidate.

Requirements: promotion and knowledge in cell biology, interest in computational biology/bioinformatics

Applications as single pdf file to [regula.aebi@vetsuisse.unibe.ch](mailto:regula.aebi@vetsuisse.unibe.ch)