

Swiss TPH



Swiss Tropical and Public Health Institute
Schweizerisches Tropen- und Public Health-Institut
Institut Tropical et de Santé Publique Suisse

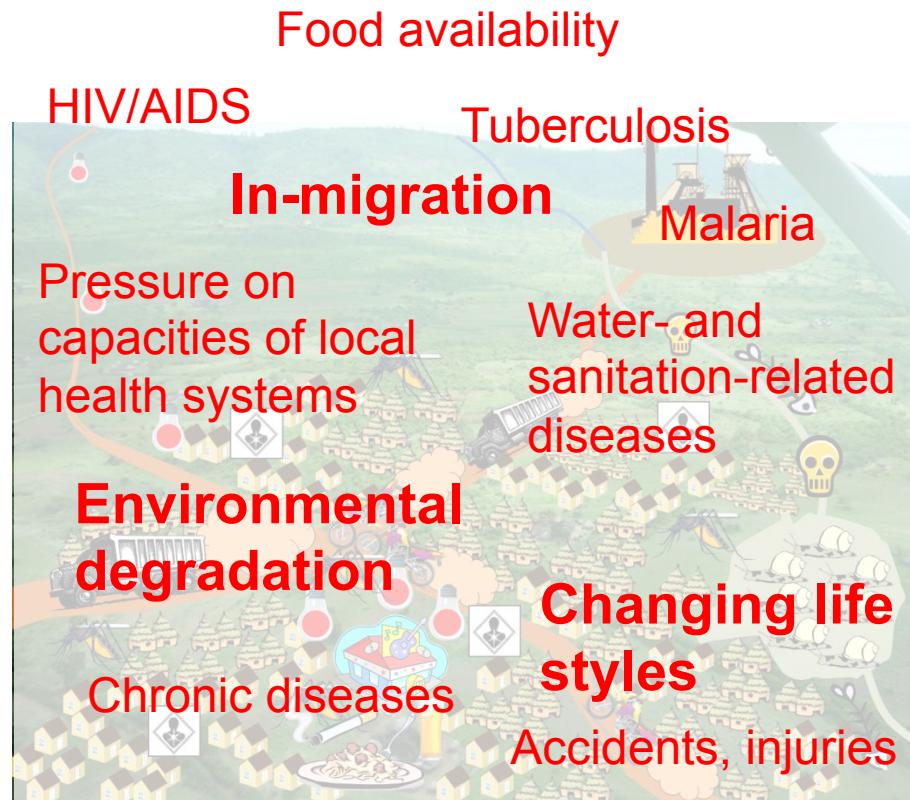
Associated Institute of the University of Basel

Mirko Winkler
Ecosystem Health Sciences Unit
Health Impact Assessment Group

Health impact assessment in the extractive industry

20th Anniversary Conference of the KFPE
Bern, 27 August 2014

→ 1-2 minute visualisation removed in this version



Risks



Opportunities

Human rights impact assessment
Environmental impact assessment Social impact assessment

Health impact assessment (HIA)

- Evidence-based decision-support tool
- Monitoring and evaluation (M&E) of health impacts

➤ **Minimise potential
negative health impacts**

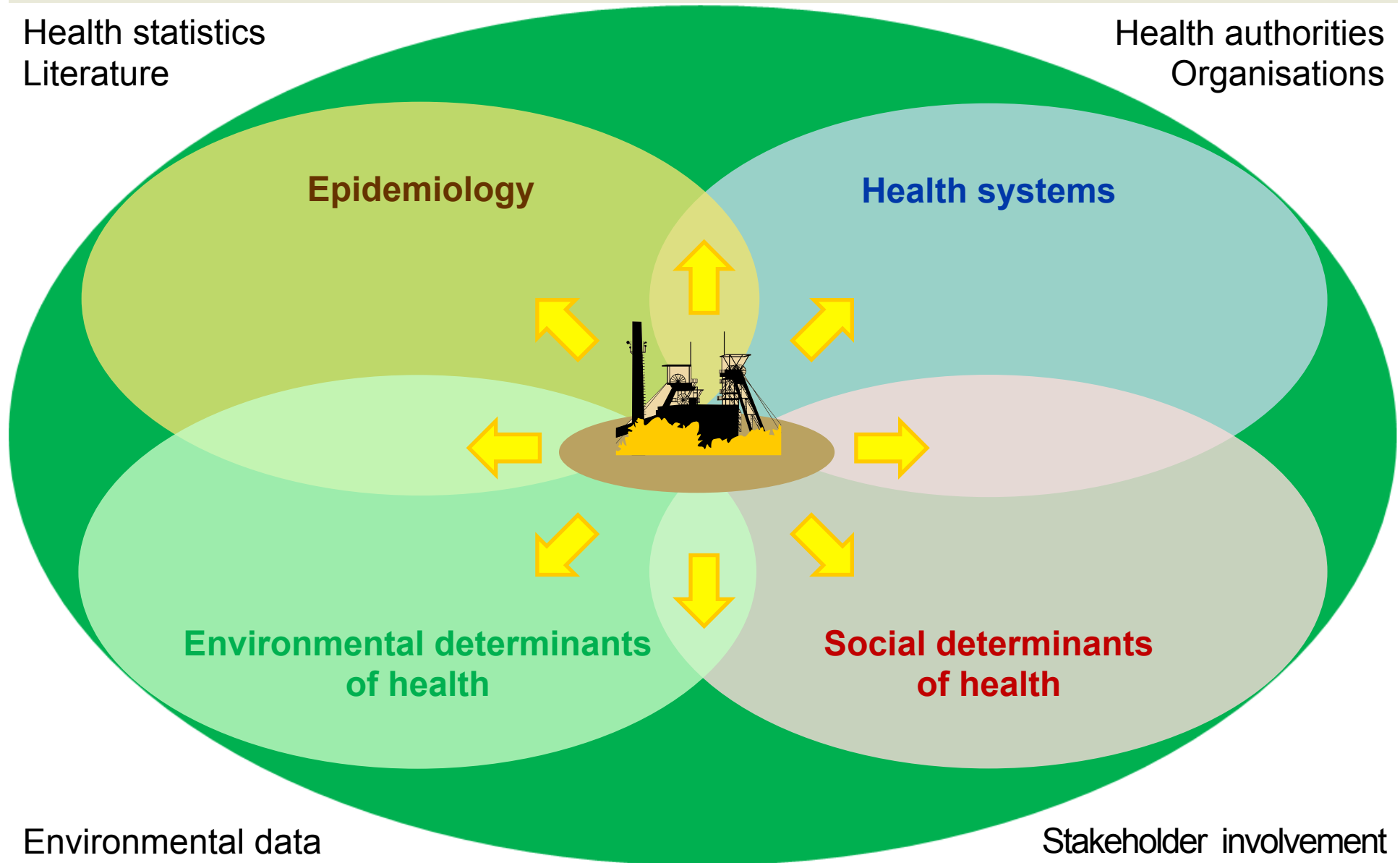
➤ **Maximise potential
health benefits**

Risks

Opportunities

Health statistics
Literature

Health authorities
Organisations



→ 1-2 minute visualisation removed in this version

HIA process



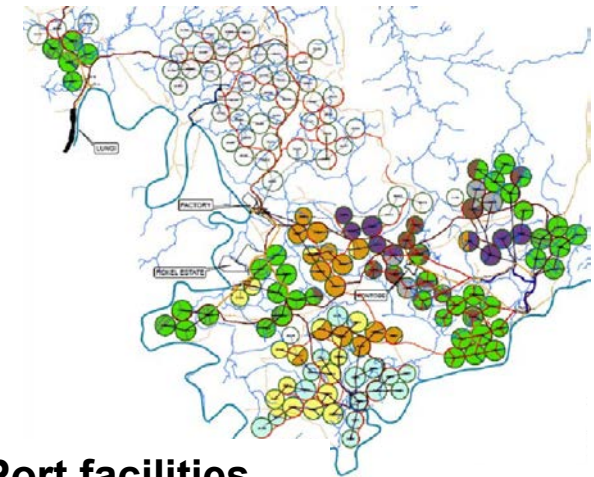
- **Evidence-base**
- **Risk assessment**
 - Prioritisation
- **Mitigation**
 - Mitigation measures
 - Opportunities for corporate social investment
- **Implementation**
 - Roles and responsibilities
 - Local partners for implementing health intervention
- **Monitoring**
 - Longitudinal (e.g. health systems data)
 - Cross-sectional





Addax Bioenergy project

- **10,000 ha sugarcane estates**
 - Ethanol for local and export markets
 - Electricity (factory and national grid)
- **Investment: € 267 millions**
 - African Development Bank and various European development banks
- **14,000 people directly impacted**
- **>2,000 locally employed people**



Sugar cane fields



Ethanol factory



Roads



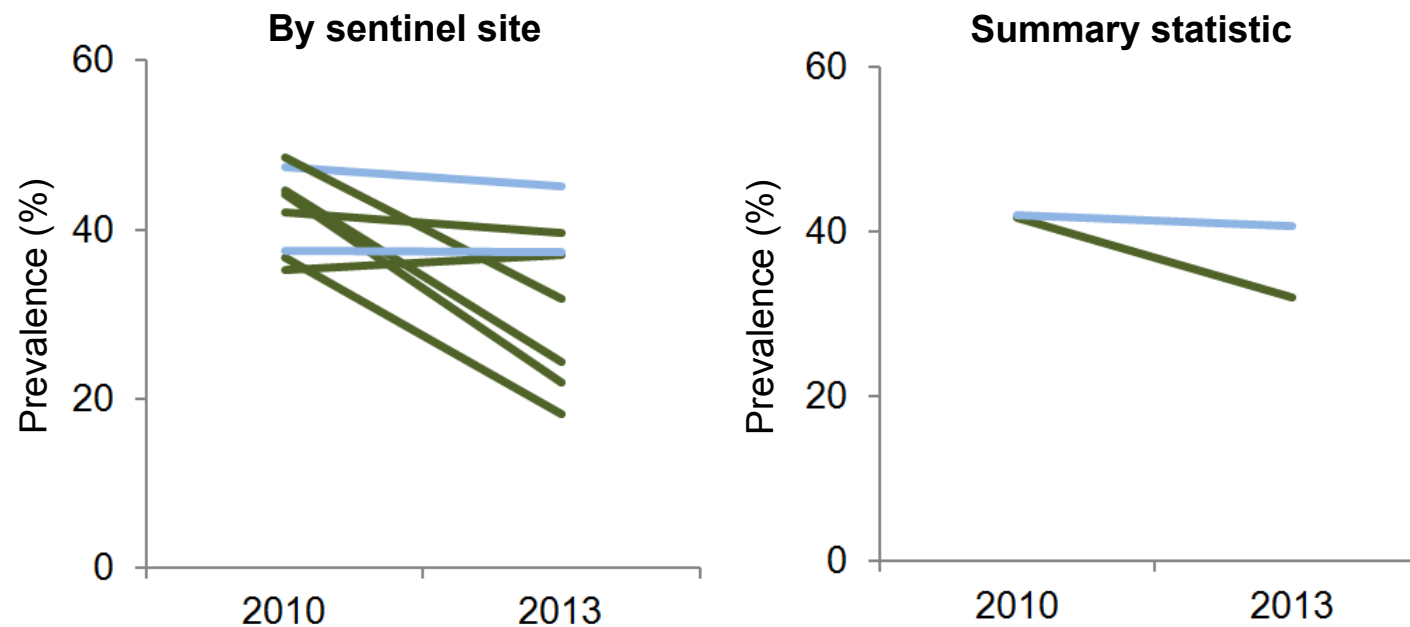
Port facilities



Cross-sectional health monitoring

Chronic malnutrition (stunting) in children aged <5 years

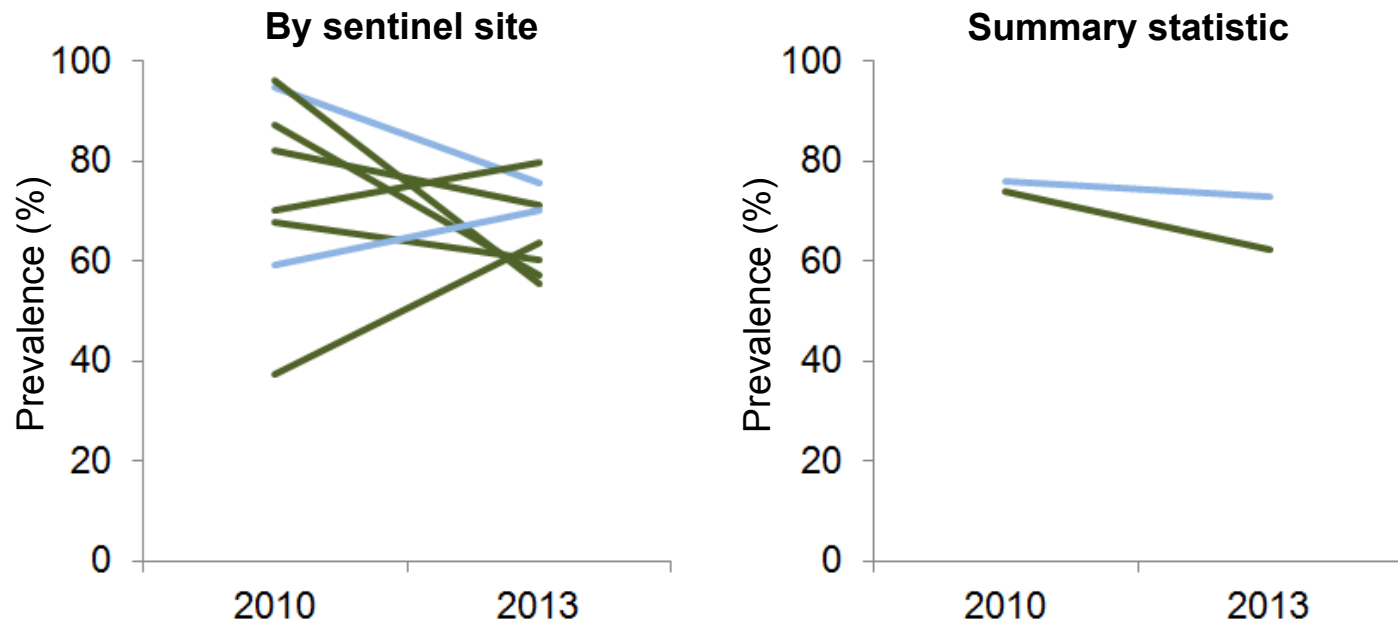
- Impacted communities (2010: n=421; 2013: n=390)
- Outside-project communities (2010: n=164; 2013: n=214)



Cross-sectional health monitoring

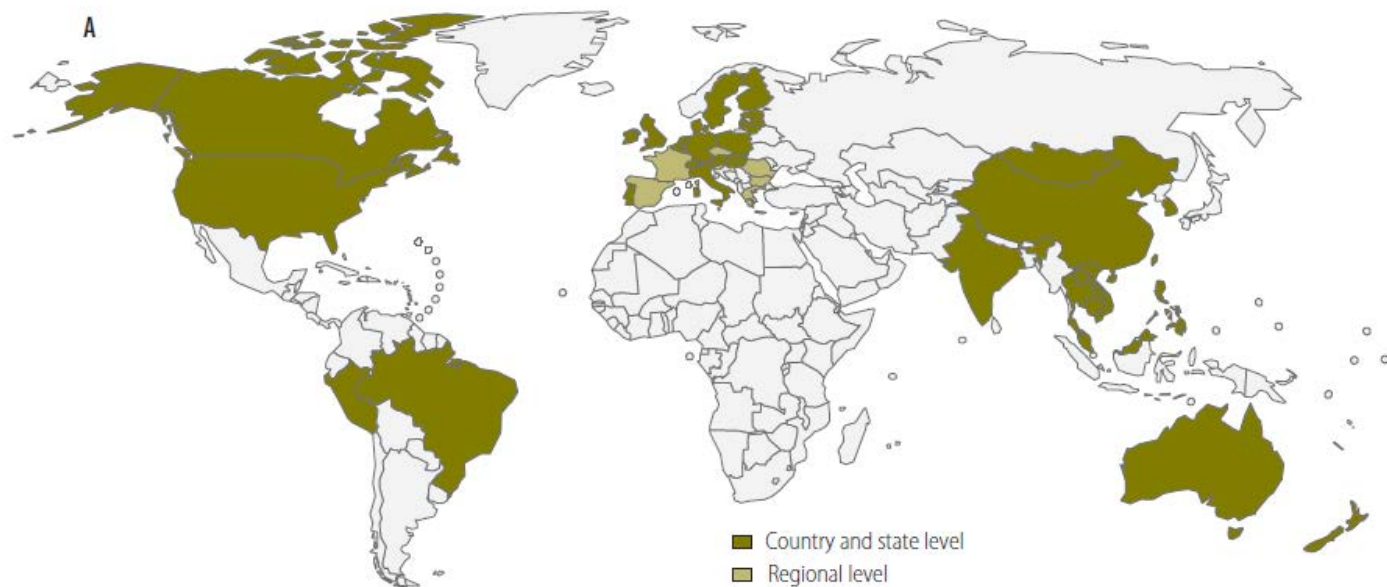
Plasmodium falciparum malaria in children aged 6-59 months

- Impacted communities (2010: n=409; 2013: n=350)
- Outside-project communities (2010: n=161; 2013: n=199)



Global HIA practice and capacities

Countries promoting HIA practice



- **Gaps in HIA practice**
- **Gaps in HIA capacities**

Winkler et al., 2013, Bull WHO

HIA practice – part of the solution

Title of conference: “**Sustainable** solutions in **governing** the extractive industries”

- **Promote practice of HIA and other forms of impact assessment in low- and middle-income countries**
 - Feasibility stage
 - Stakeholder involvement
- **Regulations at national and international levels are needed**
 - When is an HIA indicated?
 - Public disclosure/transparency
 - Responsibilities
 - Liability mechanisms



HIA capacity building

Strengthening of HIA practice holds promise for research partnerships with developing countries

- **Capacity building in HIA**
 - Expertise currently in northern hemisphere
 - Local HIA experts needed
- **Epidemiological field research**
- **Innovation, validation and application of tools and methods for HIA**