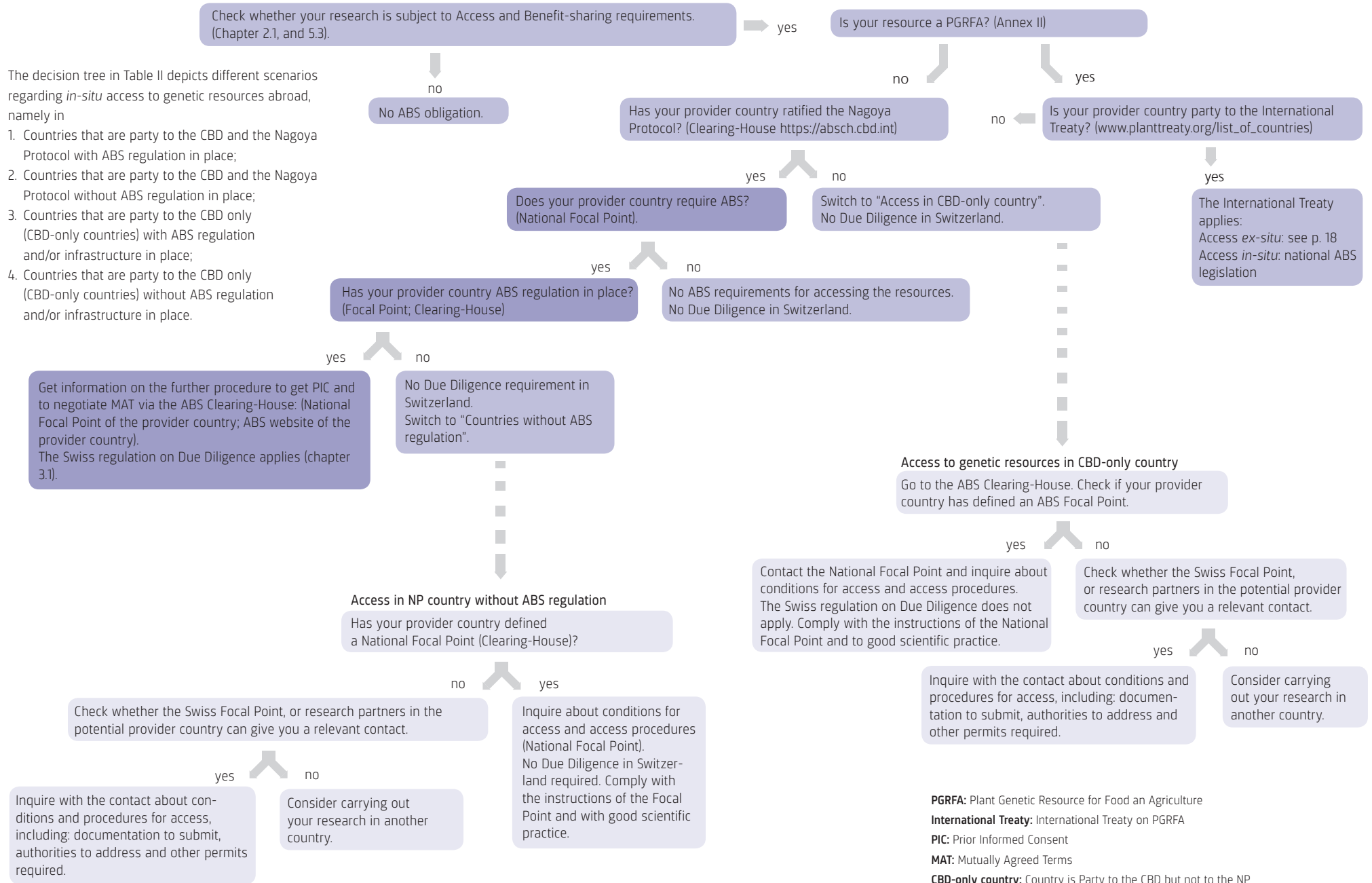


Table II: Access to genetic resources *in-situ*

Excerpt from: Susette Biber-Klemm and Sylvia I. Martinez. Utilization of genetic resources and associated traditional knowledge in academic research. Swiss Academies of Arts and Sciences (Ed.) Swiss Academies Reports 11 (4) 2016, Bern, Switzerland, page 19

The decision tree in Table II depicts different scenarios regarding *in-situ* access to genetic resources abroad, namely in

1. Countries that are party to the CBD and the Nagoya Protocol with ABS regulation in place;
2. Countries that are party to the CBD and the Nagoya Protocol without ABS regulation in place;
3. Countries that are party to the CBD only (CBD-only countries) with ABS regulation and/or infrastructure in place;
4. Countries that are party to the CBD only (CBD-only countries) without ABS regulation and/or infrastructure in place.



PGRFA: Plant Genetic Resource for Food and Agriculture
International Treaty: International Treaty on PGRFA
PIC: Prior Informed Consent
MAT: Mutually Agreed Terms
CBD-only country: Country is Party to the CBD but not to the NP