

**EPFL**



# Carbon neutrality @ EPFL

**Philippe Vollichard**  
Sustainability Officer

■ École  
polytechnique  
fédérale  
de Lausanne

Decarb 24 Mai 2019

# Climate urgency: the case of EPFL's Carbon footprint

Energy/Operations, Mobility (commuting & business), Food & Nutrition

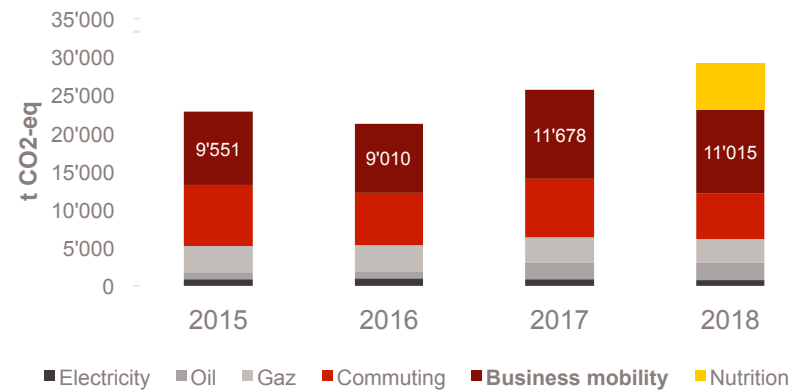


■ DECARB 24 MAI 2019

## EPFL Sustainability strategy 2018-2020

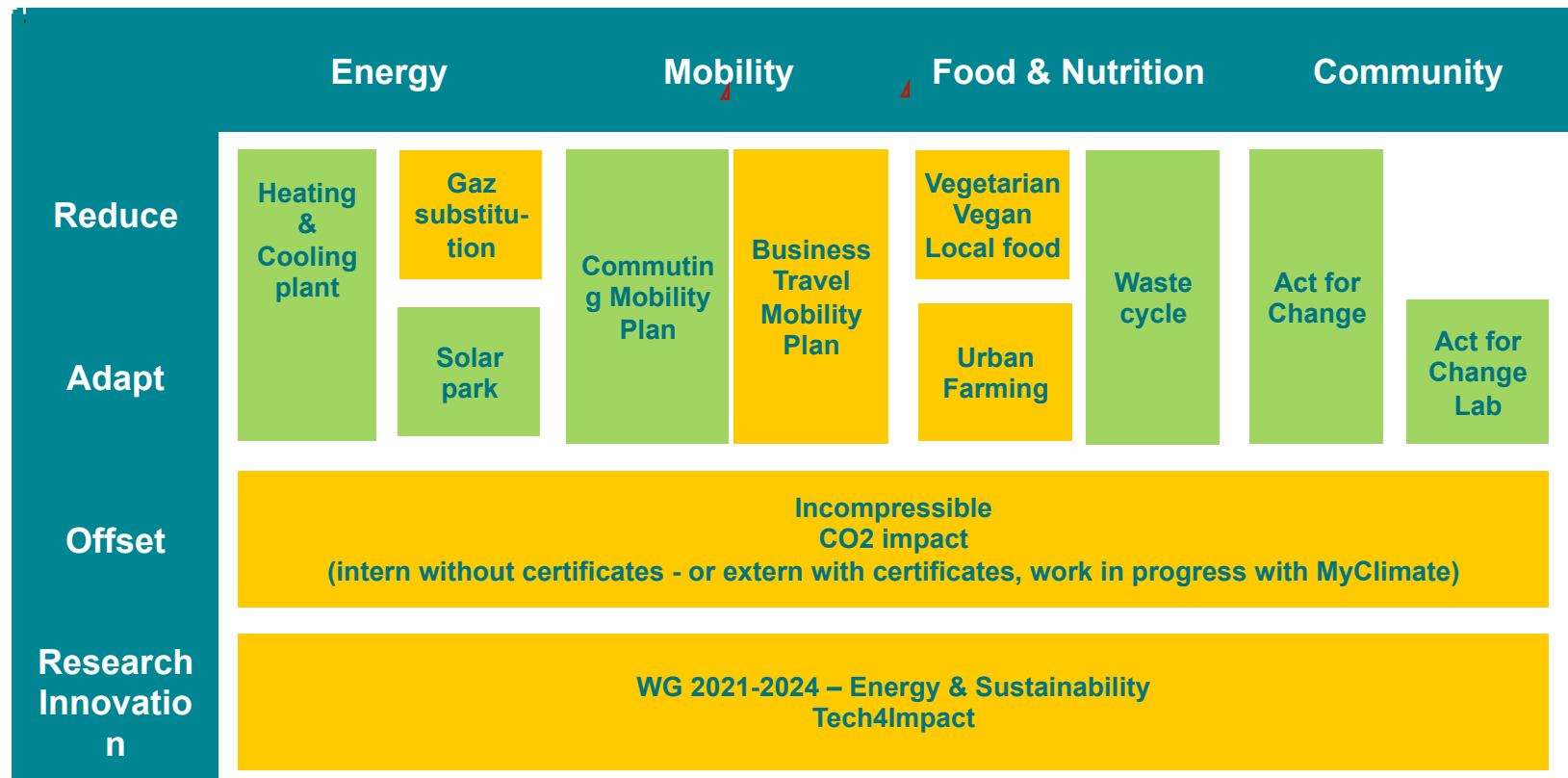
- Strategy approved by the EPFL Direction in November 2017
- Ambitious plan to reduce and offset total CO<sub>2</sub> emissions by 2020
- Flights are the main source of CO<sub>2</sub> emissions at EPFL (1/3 of the total)

### EPFL CO<sub>2</sub> emissions



# Sustainability initiatives

EPFL and sustainability: a long experience and strategic initiatives under



■ DECARB 24 MAI 2019



# EPFL: a leading role in business mobility

Three innovative studies, unique at the international level :

## 1. Analysis of existing travel data

- Overall CO<sub>2</sub> emissions could be reduced by 20-40% by replacing :
  - Business class with economy class
  - Short air trips (< 7h) by train
  - Indirect flights with direct flight
  - Pilot project SV (June 2019) TRAVEL LESS WITHOUT LOSS
  - One year project EPFL: ACT FOR CHANGE BUSINESS TRAVEL (Oct-June 2019)

## 2. Corelation between academic performance and CO<sub>2</sub> emissions

- From the results, it can be concluded that large air travel footprints provide a small to negligible added value for academic performance among EPFL Professors.

## 3. Business mobility survey

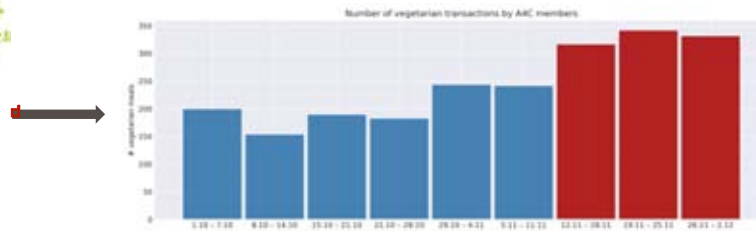
- EPFL should do more for the environment (65%), even if academic culture requires travel
- Business travel impacts personal relationships, as well as time for research and education
- Trains and videoconferencing are valid alternatives if more incentives are provided
- 31% of survey participants would reduce their business travels

# EPFL: a leading role in food

## Collective catering



Awareness



Vegeterian vs meat



Waste



Food Waste (KITRO)

## Urban farming



Call for application (End of June 2019)



■ DECARB 24 MAI 2019



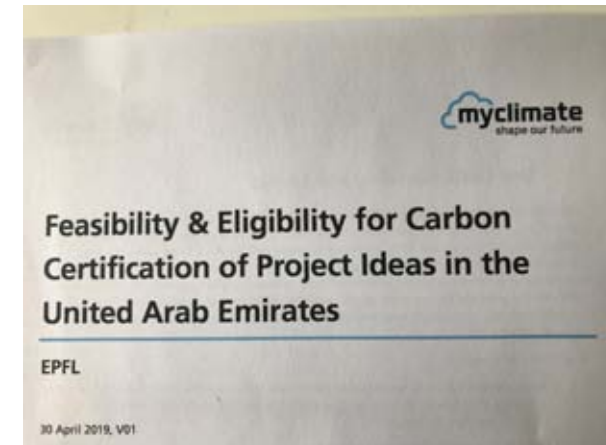
# EPFL: to compensate or not to compensate, that's the question!

EPFL follow 2 tracks:

- Internal compensation (already done for commuting with the Mobility Fund)
- Compensation with certificates: Mix 1/3 CH and 2/3 International (with the best projects as possible)



Recultivating Swiss Upland Moors



In collaboration with our Ras Al Kaima Antenna



## Not an easy job, but urgent!

The climate emergency will upset the organization of all institutions and it will be exciting to see how we can imagine serious but happy solutions together

