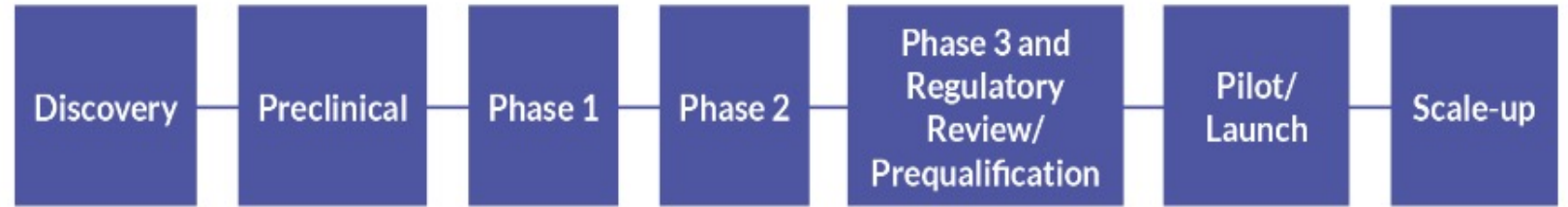


# *Power, Decoloniality and the Promise of Equitable Partnerships*



# Challenge: Ensuring products are implemented to avoid the second valley of death



Using research to inform and support routine use and scale-up of interventions



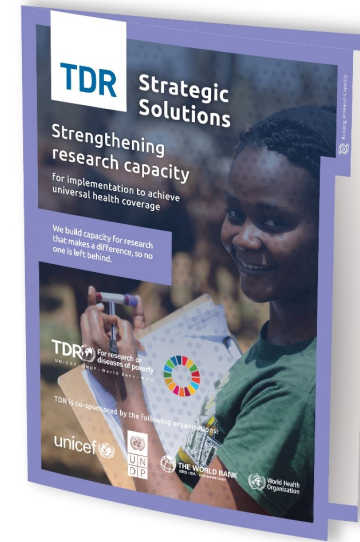
The first valley of death: from basic research to product development



The second valley of death: from licensure to routine use and scale-up

# TDR Strategy

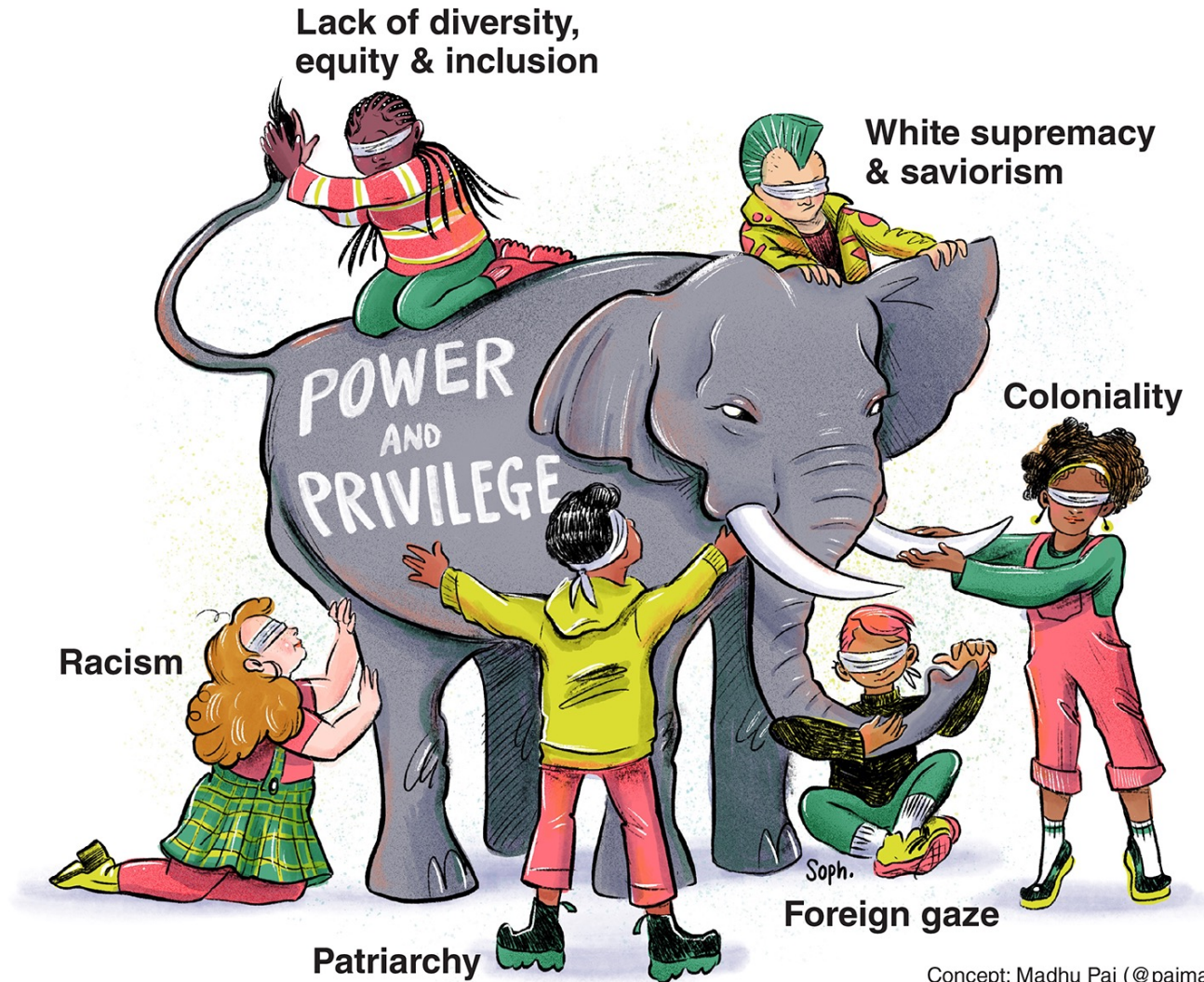
- Supporting research that improves disease control and ensures effective implementation of new and proven interventions.
- Increasing the capacity to do this research at different levels and in different systems in disease-affected countries.
- Using the power of global engagement to facilitate and accelerate a global response.





# Power, money, decoloniality? Or?

- Years of efforts do not seem to produce results we or countries wanted or want
- Research capacity and research environments continue to be an after-thought in countries
- Priorities still not established in countries but in capitals/agency HQs
- Gap in funding, balance of power
- Funders continue to tie funding, increased scrutiny, focus on results that undermines long-terms research ecosystem development



Concept: Madhu Pai (@paimadhu)  
Art: Sophie Lane (ScEYenceStudios.com)

# TDR's Podcast – Global Health Matters

- Explores how innovative and inspiring research contributes to achieving health for all.
- Objective: to discuss and share experiences and views on different aspects of global health research, with a focus on low- and middle-income country perspectives.
- With a variety of guests, mostly from LMICs.



verse guests





# Global Health Matters – exploring difficult subject



**GLOBAL HEALTH MATTERS**  
the podcast

**THE GLOBAL HEALTH PODCAST FROM TDR**

**EPISODE 10**

**ACTIONS FOR DECOLONIZING GLOBAL HEALTH**

**HOSTED BY**  
**GARRY ASLANYAN**  
TDR Partnerships & Governance Manager

**FEATURING**

**CATHERINE KYOBUTUNGI**  
Executive Director, African Population and Health Research Center, Kenya

**AGNES BINAGWAHO**  
Vice Chancellor, University of Equity in Global Health, Rwanda

**FOLLOW @TDRNEWS ON TWITTER, TDR ON LINKEDIN AND @GHM\_PODCAST ON INSTAGRAM FOR UPDATES.**

US\$30m grant awarded to the nonprofit health organization PATH by the US government's President's Malaria Initiative.

The grant funded a consortium of 7 institutions in the USA, the UK and Australia to support African countries in the improved use of data for decision-making in malaria control and elimination. Not one African



GLOBAL HEALTH MATTERS

TDR For research on diseases of poverty  
UNICEF • UNDP • World Bank • WHO

The movement to decolonize global health... it's OK, but I prefer that it's a movement to **fight white supremacy** in global health.



Agnes Binagwaho,  
Vice Chancellor, University of Global Health Equity in Rwanda



GLOBAL HEALTH MATTERS

**GUKORA  
UBUSHAKASHATSI KU  
BUZIMA KU ISI  
BISOBANURA IKI  
KURI NJYE?**

Nkurarikiye  
gukurikira ibice  
biheruka  
kugirango  
wige byinshi!

AGNES BINAGWAHO  
Vice Chancellor, University  
of Global Health Equity,  
U Rwanda

IRABONEKA KU MIRONGO YOSE Y'INGENZI YA PODCAST.

## THE OPEN LETTER TO SCIENCE AND DEVELOPMENT FUNDERS THAT STARTED A GLOBAL DEBATE

Written by Ngozi A. Erundu,  
Ifeyinwa Aniebo, Catherine  
Kyobutungi, Janet Midega,  
Emelda Okiro and Fredros Okumu

Discussed in TDR's  
*Global Health Matters* podcast  
episode 10: Actions for  
decolonizing global health

*listen now*



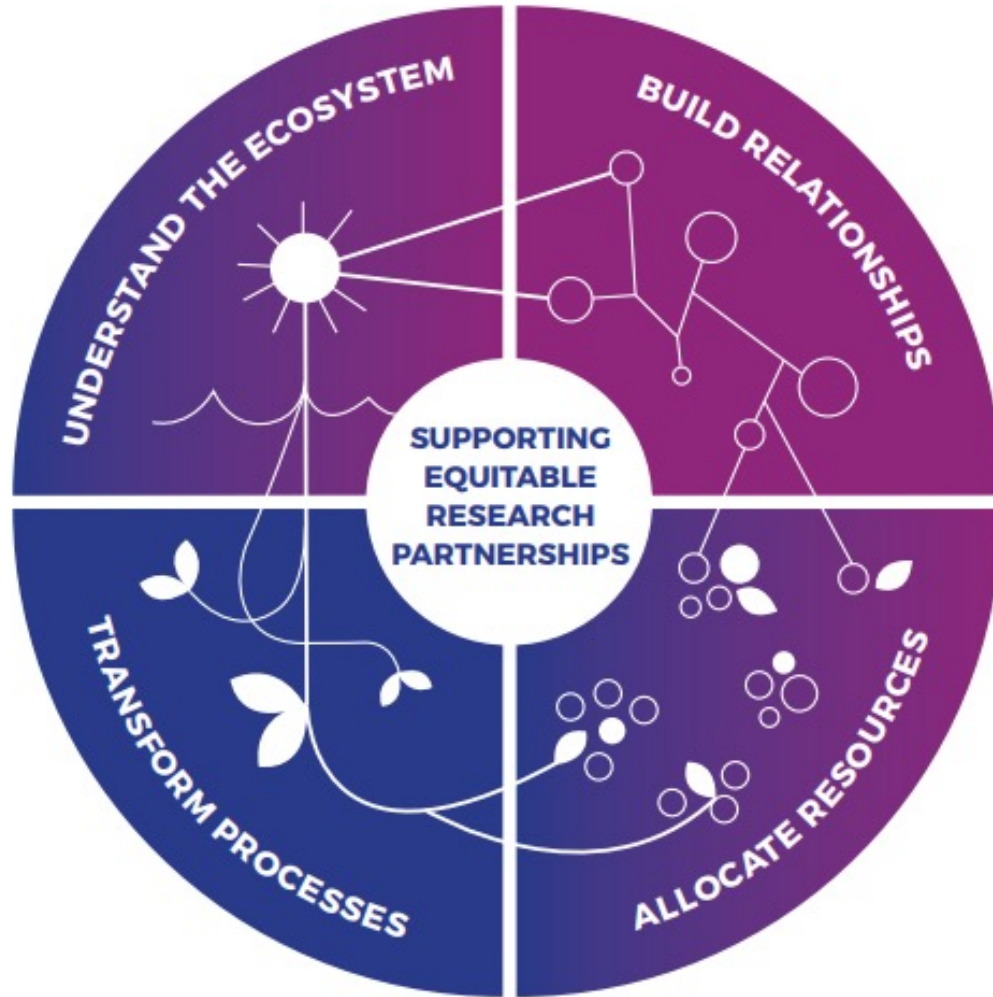




Decolonizing is like saying,



# This Good Practice Document...



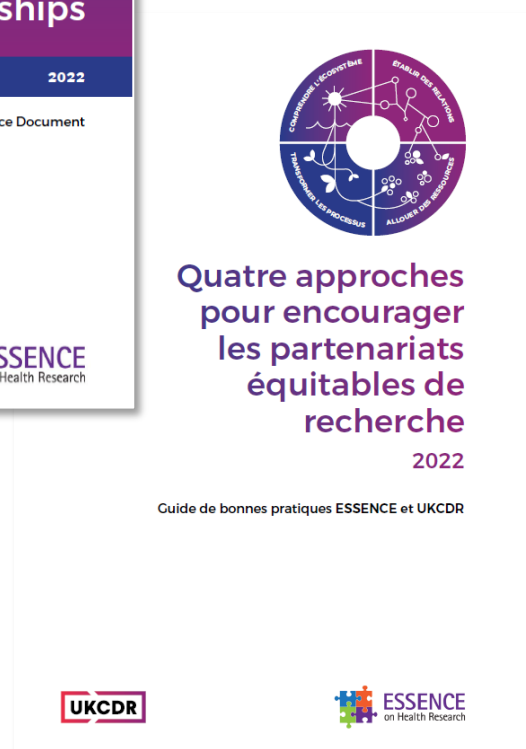
- Was developed by a **taskforce of global research funders**
- Contains **four inter-connected approaches** to supporting equitable research partnerships
- Provides **practical recommendations** for:
  - Research funders
  - Institutions
  - Research teams
- Links to **case studies** and collates existing **resources**



**ESSENCE**  
on Health Research



# How this document was created



## Project process:

- Global survey (418 responses)
- 5 consultative groups
- Review of existing resources
- Development of 9 learning case studies
- Launch of [Equitable Partnerships Resource Hub](#)

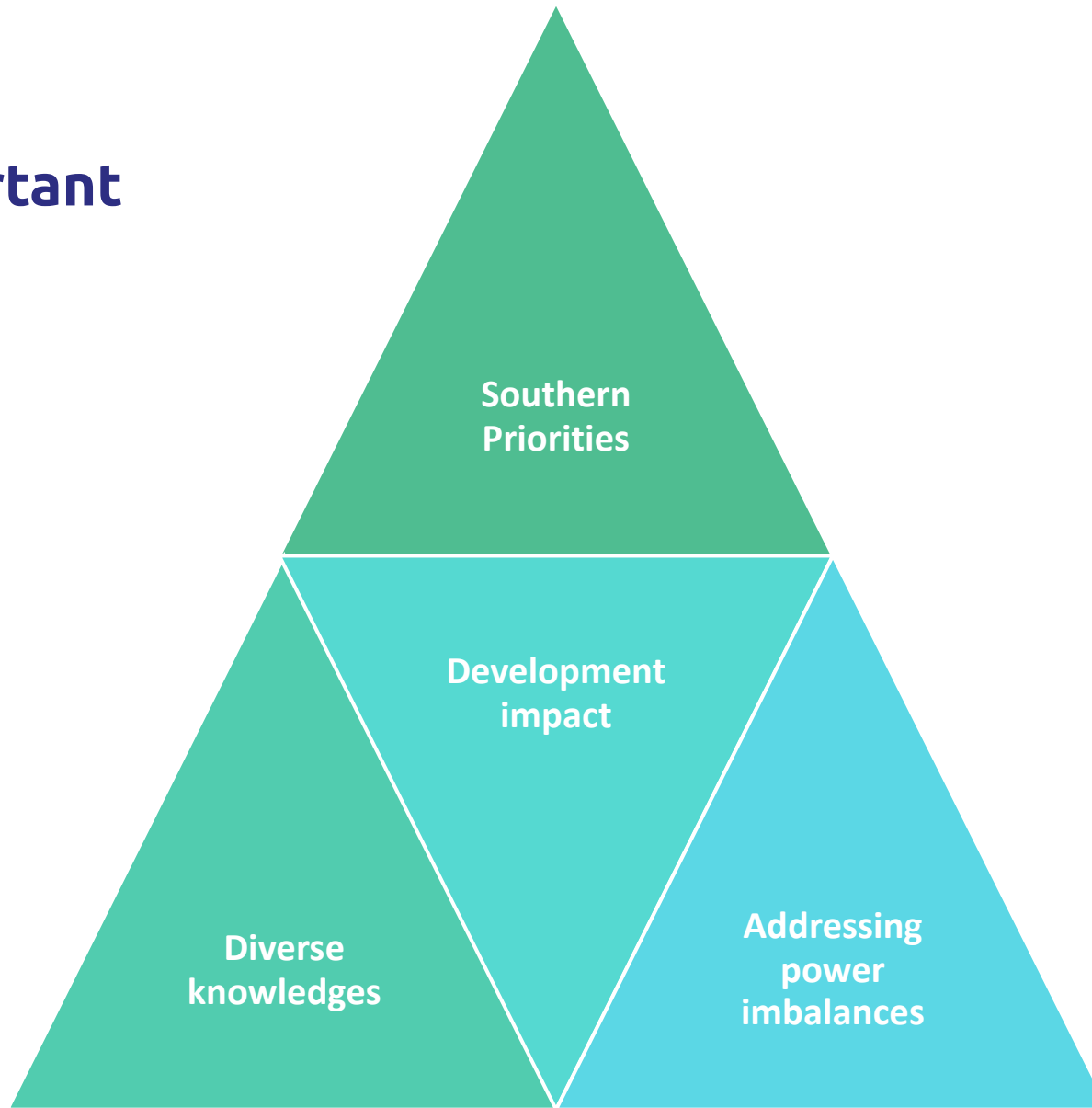


# How to use this doc

- Pick an approach relevant to your work or look at them all together
- Recommendations at three-levels:
  - Funder
  - Research institution
  - Researchers
- Read additional resources
- Make a plan of action

| For funders                             | For research institutions | For researchers | RECOMMENDATIONS ON APPROACH 1<br>SUPPORT THE RESEARCH PARTNERSHIP ECOSYSTEM  |
|---|---------------------------|-----------------|--|
| On expanding the value mindset          |                           |                 |  |
| ●                                       |                           |                 | Recognise the value inherent in equitable partnerships and establish funding policies and practices that go beyond identifying and managing risk in purely financial terms.  |
| ●                                       |                           |                 | Consider how the attitudes and culture in HIC funding organisations impact on LMIC partners, and address inclusion and representation in internal decision-making structures.  |
| On taking a holistic approach to equity |                           |                 |  |
| ●                                       | ●                         |                 | Reflect, monitor and reward the implementation and promotion of equitable partnership building practices across the research continuum, and create an enabling environment that encourages researchers to strive for equity in all dealings with project partners. |
| ●                                       |                           |                 | Ensure LMIC representation in funder-level partnerships (see <a href="#">Case Study 1</a> ) as well as in research-priority setting and call design (see <a href="#">Case Study 3</a> ).   |
| ●                                       |                           |                 | Work with partners to design research calls in ways that enhance equity, including, for example, pre-call announcements, long call windows and clear eligibility guidelines.   |
|   | ●                         | ●               | Support the co-development of collaboration agreements that guide partnerships between research teams in multi-country consortia.  |
| On addressing power imbalances          |                           |                 |  |
| ●                                       |                           |                 | Develop policies that facilitate and increase LMIC leadership and ownership, such as funding LMIC partners directly and supporting LMIC-led research proposals (see <a href="#">Case Study 2</a> and <a href="#">Approach 3</a> ).                                 |

## Why equity is important

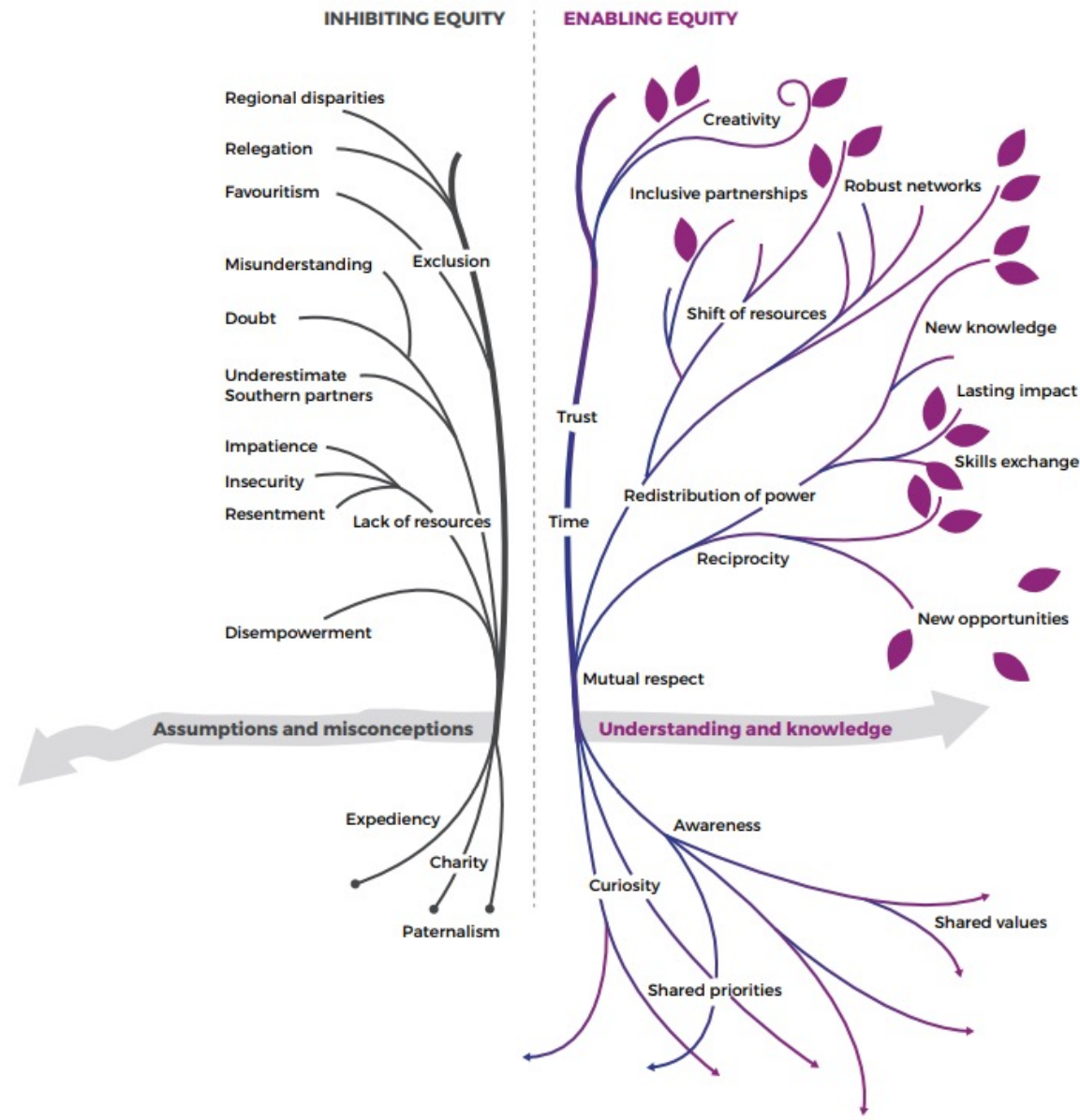


**ESSENCE**  
on Health Research





# What does equity look like?





## Approach 1. Support the research partnership ecosystem



Effective and truly equitable partnerships require financial security and long-term commitment.

– Researcher, Nepal

- *Shifting attitudes to value*
- *Equity holistically*
- *Addressing power imbalances*
- *Long-term approach*

Example funder recommendation:

**For HIC funders, ensure LMIC representation in funder-level partnerships as well as in research-priority setting and call design.**



**ESSENCE**  
on Health Research







## Approach 2. Strengthen research relationships and research systems

“ For a partnership to be truly equitable, all parties have to realise they need each other and can learn from one another.

– Researcher, Netherlands

- *Knowledge of context*
- *Two-way learning*
- *Respectful research relationships*
- *Invest in support system around research*

Example funder recommendation:  
**Ensure that project funding contributes to a strategy for strengthening institutional research systems, including research management and financial capabilities.**



**ESSENCE**  
on Health Research





## Approach 3. Budget for partnership building



We have no funding for pre-proposal work to set the agenda and thresh out the issues. There needs to be support for the pre-proposal stage, that is what is lacking.

– Researcher, India

- *Address power and resource imbalances*
- *Support partnership building*
- *Development of outputs, impact and future collaboration*

Example funder recommendation:  
**Use flexible pump-prime funding mechanisms such as pre-call workshops and two-stage funding calls to support partnership building.**



**ESSENCE**  
on Health Research





## Approach 4. Implement processes and procedures that sustain partnerships

“ When HIC and LMIC institutions see partnerships as purely contractual, short-term thinking magnifies power imbalances.

– Research Manager, UK

- ***Distributed research governance***
- ***Addressing the terms of research:***
  - *Due diligence*
  - *Costing*
  - *Intellectual property*
  - *Ethical review*

Example funder recommendation:  
**Strengthen the role of research management professionals so that they can help to embed equity in all institutional agreements and support research managers from LMIC institutions in negotiating contracts.**



**ESSENCE**  
on Health Research

