



ipbes

IPBES Global Assessment

Friday 05, May



www.ipbes.net

UN 
environment


United Nations
Educational, Scientific and
Cultural Organization



Food and Agriculture
Organization of the
United Nations


UN
DP
empowered lives.
resilient nations

The IPBES Global Assessment of Biodiversity and Ecosystem Services

- will critically assess the state of knowledge on past, present and possible future trends in multi-scale interactions between people and nature, taking into consideration different world views and knowledge systems. The assessment will examine status, trends (past and future), direct and indirect drivers of change, values and response options regarding nature (including biodiversity and the structure and functioning of ecosystems on land and in inland waters, coastal zones and global oceans), nature's benefits to people (including ecosystem goods and services) and the interlinkages between the elements in the conceptual framework.

Objective 1 Strengthen the capacity and knowledge foundations of the science-policy interface to implement key functions of the Platform:

- a) **Priority capacity-building-needs** to implement the Platform work programme are **matched with resources** through catalysing financial and in-kind support
- b) **Capacities needed to implement the Platform work programme** are **developed** with support provided by network on capacity-building
- c) Procedures and approaches for **working with indigenous and local knowledge systems**
- d) **Priority knowledge and data needs** for policy-making are addressed through catalysing efforts to generate new knowledge and networking

Objective 2 Strengthen the science-policy interface on biodiversity and ecosystem services at and across the subregional, regional and global levels:

- a) **Guide on production and integration of assessments** from and across all scales
- b) **Regional/Subregional assessments** on biodiversity and ecosystem services
- c) **Global assessment** on biodiversity and ecosystem services

Objective 3 Strengthen the science-policy interface with regard to thematic and methodological issues:

- a) **Thematic assessment on pollination** and food production
- b) **Thematic assessments on land degradation** and restoration; **on invasive alien species**; and **on sustainable use**.
- c) **Policy support tools and methodologies for scenarios analysis and modelling** of biodiversity and ecosystem services based on an assessment and a guide
- d) **Policy support tools and methodologies regarding value, valuation and accounting** of biodiversity and ecosystem services based on an assessment and a guide

Objective 4 Communicate and evaluate Platform activities, deliverables and findings:

- a) Catalogue of relevant assessments
- b) Development of an information and data management plan
- c) Catalogue of policy support tools and methodologies
- d) Set of communication, outreach and engagement strategies, products and processes
- e) Reviews of the effectiveness of guidance, procedures, methods and approaches to inform future development of the Platform

The Assessment

- **6 Chapters:**

1 – Introduction and Scene Setting

2 – Status and Trends

3 – Assessing progress towards SDGs, Aichi Biodiversity targets and other international biodiversity-related goals/targets

4 - plausible futures of nature, nature's benefits to people and their contributions to a good quality of life

5 - scenarios and pathways towards a sustainable future

6 - opportunities and challenges for decision makers

“Progeny of and successor to the Millennium Ecosystem Assessment” – Sir Robert Watson, IPBES Chair

The poster is for an IPBES event. It features the IPBES logo (Science and Policy for People and Nature) and a collage of images including a dragonfly, a person in a hat, and a tiger. The text on the poster includes: 'Side Event #2303', 'You are Invited: IPBES Global Assessment on Biodiversity and Ecosystem Services', '“Progeny of and successor to the Millennium Ecosystem Assessment” – Sir Robert Watson, IPBES Chair', 'Venue: GRUAC Regional Group Meeting Room, Sunrise Building, Second Floor', 'Wednesday, 7 December at 1.15 p.m.', and 'An update on the IPBES Global Assessment - including the timeline - with a focus on evaluating progress towards the Aichi Biodiversity Targets and the review of implementation of the Strategic Plan for Biodiversity 2011-2020.'

1 – Introduction and Scene Setting

2 – Status and Trends

3 – Assessing progress towards SDGs, Aichi Biodiversity targets and other international biodiversity-related goals/targets

4 - plausible futures of nature, nature's benefits to people and their contributions to a good quality of life

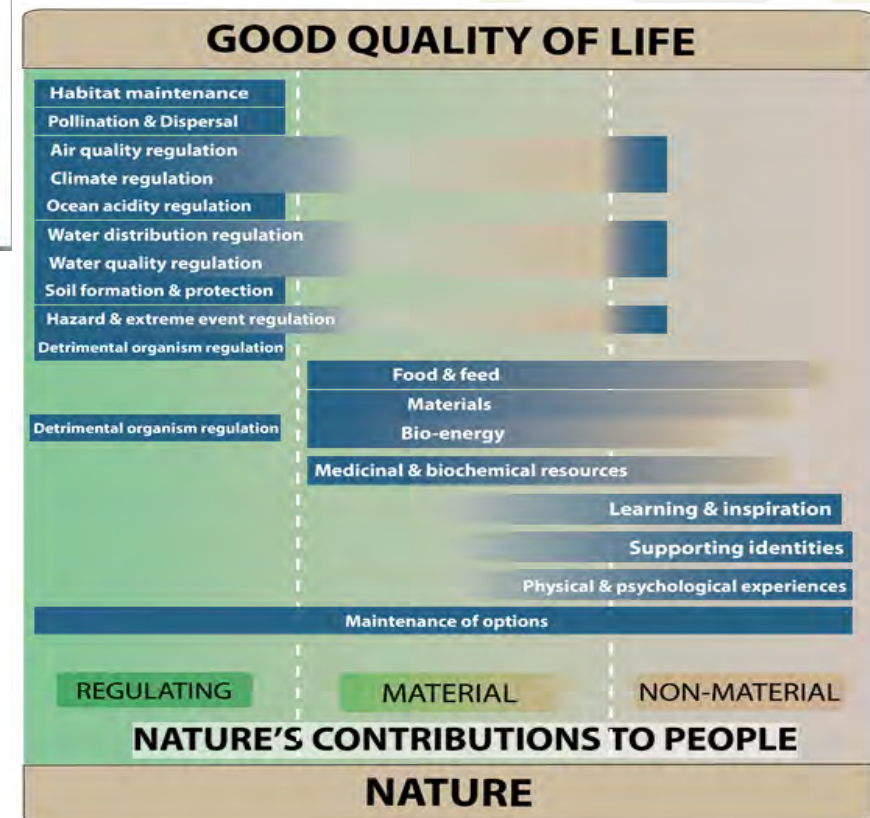
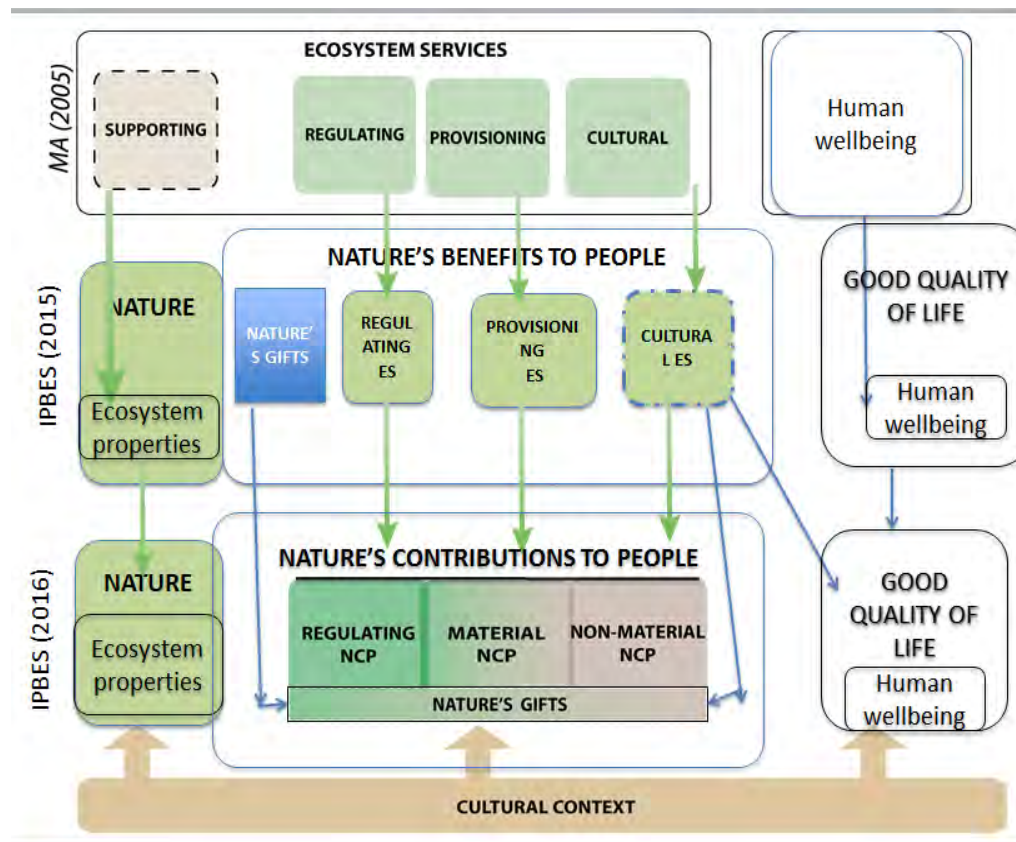
5 - scenarios and pathways towards a sustainable future

6 - opportunities and challenges for decision makers

Volume 1 – Current State and Trends

Volume 2: Scenarios

Volume 3: Policy Responses



The 3 co-chairs



- **Sandra Diaz (Argentina)**
- **Josef (Sepp) Settele (Germany)**
- **Eduardo (Edu) Brondizio (Brazil/USA)**

The TEAM

- 118 Experts in place
- 17 Review Editors

Chapter	Review Editors
1	3 (also OVERALL Review Editors)
2	6* (2 for each subsection: Nature, NCP, Drivers)
3	2
4	2
5	2
6	2

- 1 Resource Person
- 16 Fellows
- 3 TSU + 4 TSU from Scenarios and Models (Chs 4 & 5)
- 4 Chapter Scientists



TIMELINE

- Scoping Meeting
- Scoping report
- **APPROVED at IPBES-4**
- Selection of experts
- First Author Meeting (Bonn, Germany)
- Zero Order Drafts
- **Shaping the assessment and cross-chapter links**
 - Systematic Review protocol
 - Drivers typology
 - Units of Analysis
 - Indicators* (with the K & D Task Force and TSU)
 - Nature's Contributions to People (NCP)
 - Values* (with the Values TSU)
 - ILK* (with the ILK Task Force and TSU) – CONSULTATIONS & Participatory approach happening now
- **Internal Review**
- **ALL CHAPTER MEETINGS****
- **First Order Draft review by Experts 15 June – 15 August**



**8.5
months!**



ILK-related activities

- Online survey – launched soon*
- Side Event at the 16th session of the United Nations Permanent Forum on Indigenous Issues (New York, USA, 24 April – 03 May, 2017):

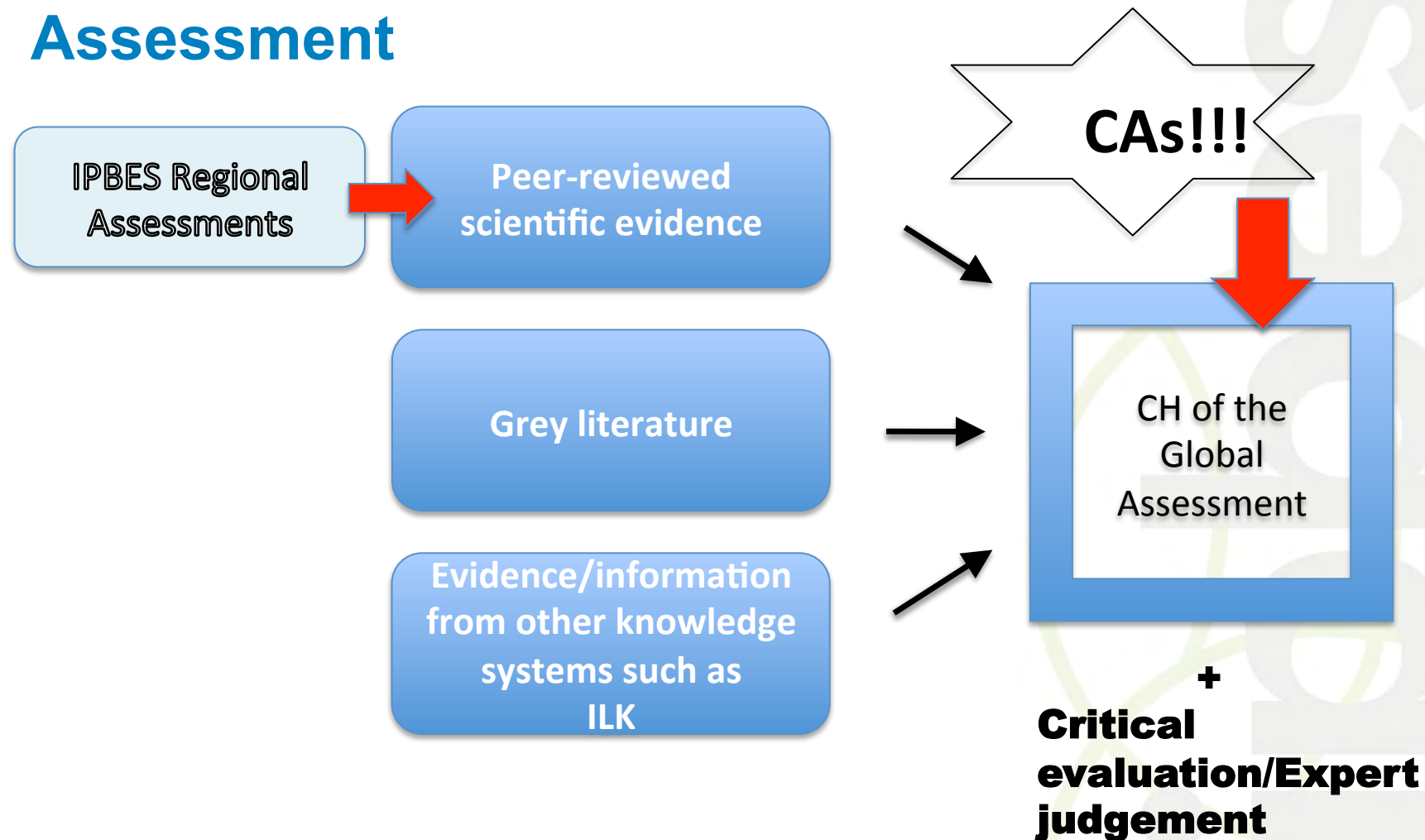
Event title: Operationalization strategy for advancing Indigenous and Local Knowledge and Practices (ILK) in the IPBES Global Assessment

- Session at the 40th Annual Conference of the Society of Ethnobiology (Montreal, Canada, 10-13 May, 2017):

Event title: The IPBES Global Assessment of Biodiversity and Ecosystems Services

- 10th meeting of the Ad Hoc Open-ended Working Group on Article 8(j) and Related Provisions of the Convention on Biological Diversity

IPBES Regional Assessments and the Global Assessment

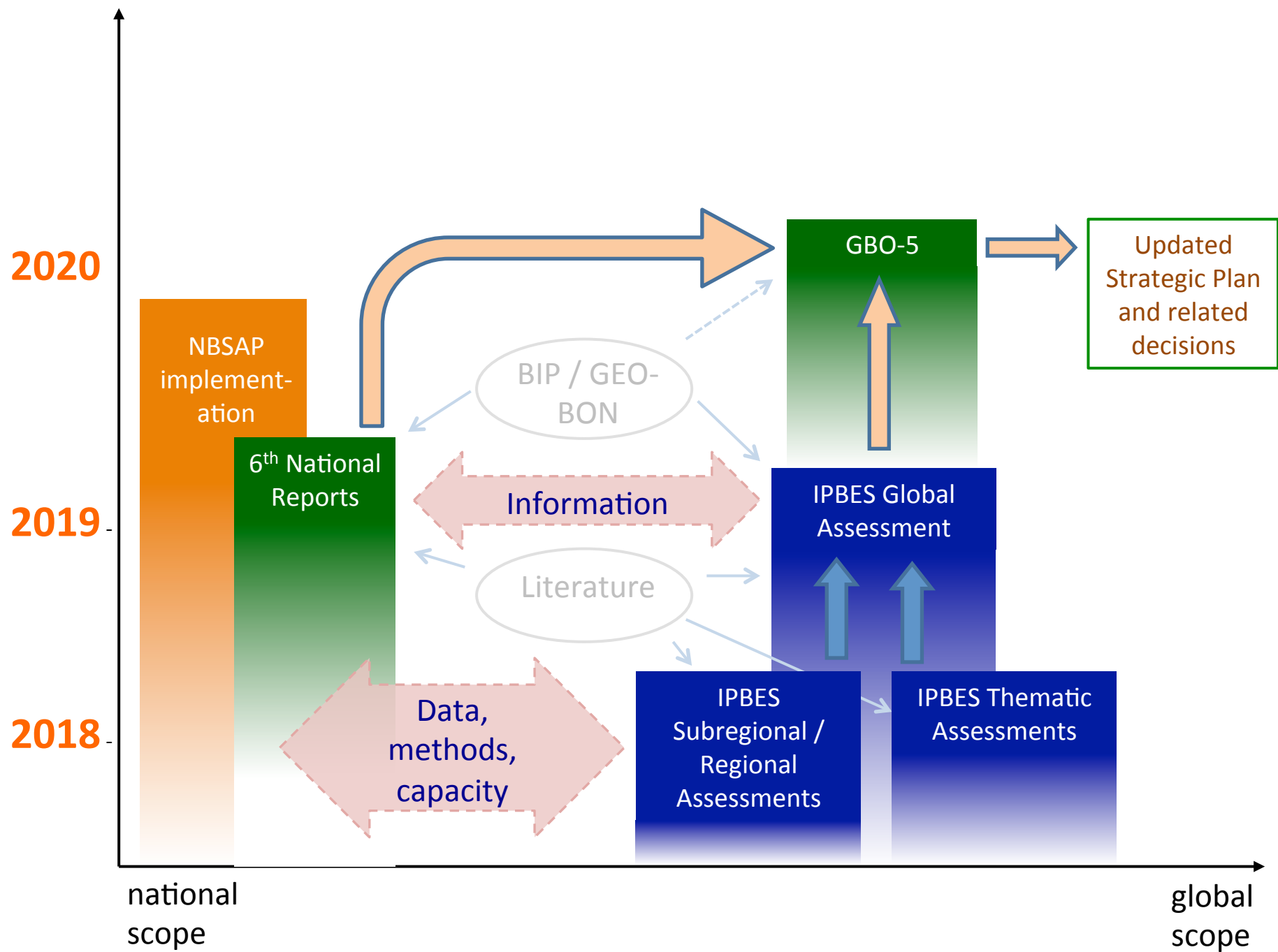


Global Assessment and links to the CBD

GBO-5 will provide final evaluation on the achievements & implementation of the Strategic Plan for Biodiversity 2011-2020 and give an outlook of the follow-up to this plan starting in 2021.

This evaluation should draw on the 6th national reports submitted by CBD parties, an evaluation of global indicators, as well as the regional, global and thematic assessments on biodiversity and ecosystem services carried out by IPBES.

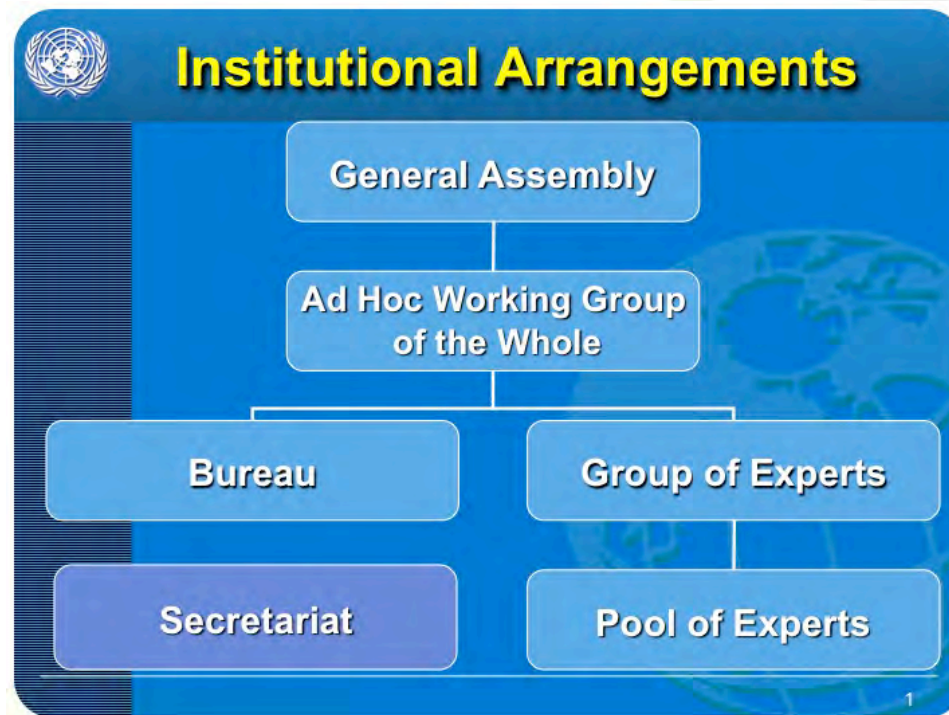
GBO-5 will be reviewed by the COP during its 15th meeting in 2020.



Global Assessment and links to the WOA

The Platform's global assessment **will build on WOA I**, which was completed in 2015. The component of the assessment focused on the oceans will include elements such as **values, indirect drivers, scenarios associated with marine biodiversity and its benefits to people and management of marine resources**. The assessment will also directly address how **changes in human quality of life are linked to the trends in ocean uses and ocean biodiversity** documented in WOA I.

**Lorna Inniss and
Alan Simcock***
(Joint Coordinators)





Remainder of 2017...

- **First Order Draft Review by Experts 15 June – 15 August, 2017 **PLEASE register to review!**
- **Second Author Meeting 18-22 September 2017**
- **Working from the First Order Draft to the Second Order Draft and the Summary for Policymakers (1st draft)**
- **Internal Review December 2017**



Summary

- Content Development is ongoing - AMBITIOUS
- Innovative approaches are being set in motion (ILK, Values, CF, Scenarios and Models etc.)
- We are making links to reduce redundancy and adding value – linking to CBD, WOA, GEO and with strategic partners Future Earth, CITES, Ramsar, UNCCD etc.



Thank you!



Science and Policy
for People and Nature

IPBES Secretariat, UN Campus
Platz der Vereinten Nationen 1, D--53113 Bonn, Germany
secretariat@ipbes.net

 @IPBES
www.ipbes.net