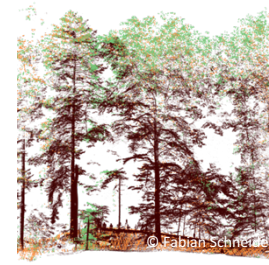
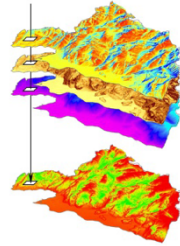


GUEST LECTURES

USING REMOTE SENSING FOR BIODIVERSITY ASSESSMENTS

UNIVERSITY OF ZURICH (IRCHEL CAMPUS), ROOM Y03-G91



MONDAY, 05.02.2018, 12:00 – 16:20

WEDNESDAY, 07.02.2018, 11:00 – 18:00

USING REMOTE SENSING DATA TO INFORM SPECIES DISTRIBUTION MODELS

USING REMOTE SENSING DATA TO INFORM ESSENTIAL BIODIVERSITY VARIABLES

SPEAKERS

NIKLAUS ZIMMERMANN (SWISS FED. INST. FOREST, SNOW & LANDSCAPE)

PETER VERBURG (VU AMSTERDAM)

WALTER JETZ (YALE U)

THOMAS DIRNBÖCK (ENV. AGENCY AUSTRIA)

XAVIER MORIN (U MONTPELLIER)

MICHAEL ASHCROFT (U WOLLOGONG)

ERLE ELLIS (U MARYLAND)

BOB O'HARA (U TRONDHEIM)

SPEAKERS

JEANNINE CAVENDER-BARES (U MINNESOTA)

DAVID SCHIMEL (JPL/NASA)

PAUL MORECROFT (HARVARD U)

NESTOR FERNANDEZ (GEO BON)

PANEL DISCUSSION

MICHAEL SCHAEPMAN (U ZURICH) WALTER JETZ (YALE U)
NICOLAS COOPS (U BRIT. COLUMBIA) DAVID COOMES (U CAMBRIDGE)

More information: <http://www.globdiversity.net/news-events/international-workshops/>