



Temperature and health

Current and future challenges of a changing population in a changing climate

Ana M. Vicedo-Cabrera

Institute of Social and Preventive Medicine, University of
Bern, Bern, Switzerland

Oeschger Center for Climate Change Research.
University of Bern, Bern, Switzerland.

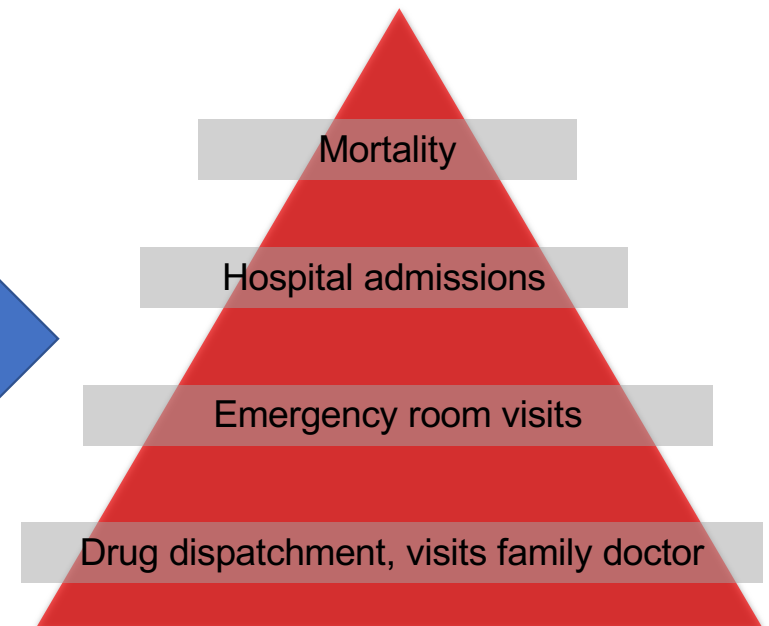
Climate Change & Health



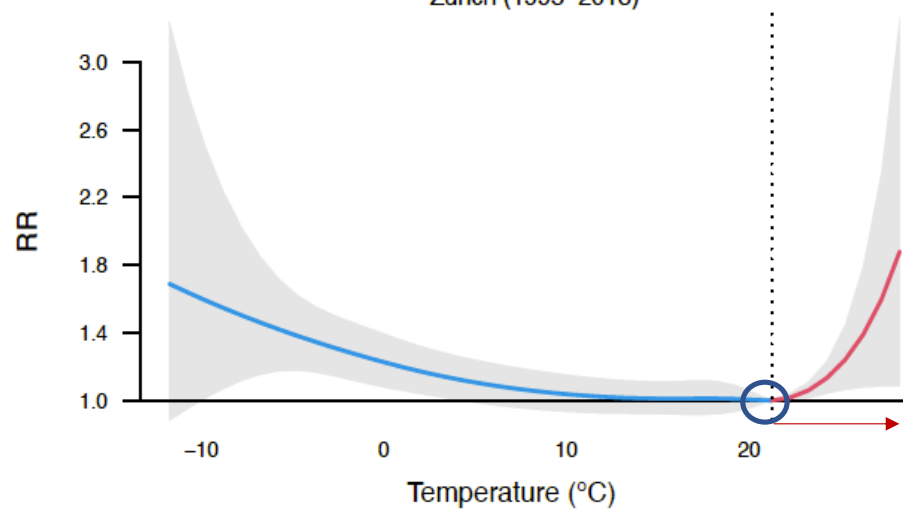
Climate Change & Health - HEAT

Exposure to **HEAT**

Physiological response



Temperature-related mortality impacts
Zurich (1995–2013)




Indirect impacts:

- Health system
- Economic costs
- Labor productivity

Vulnerable populations:

- Elderly
- Children
- Pregnant women
- Chronic patients
- Workers (outdoors)

THE ROLE OF PUBLIC HEALTH



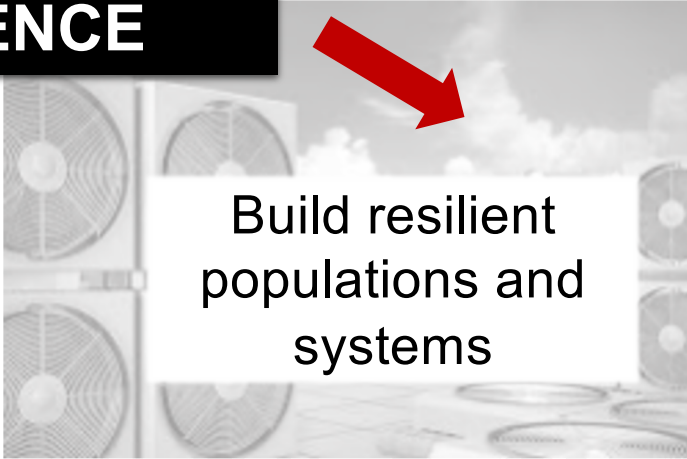

Anticipate impacts
Provide solutions



**REGULATORY
SCIENCE**



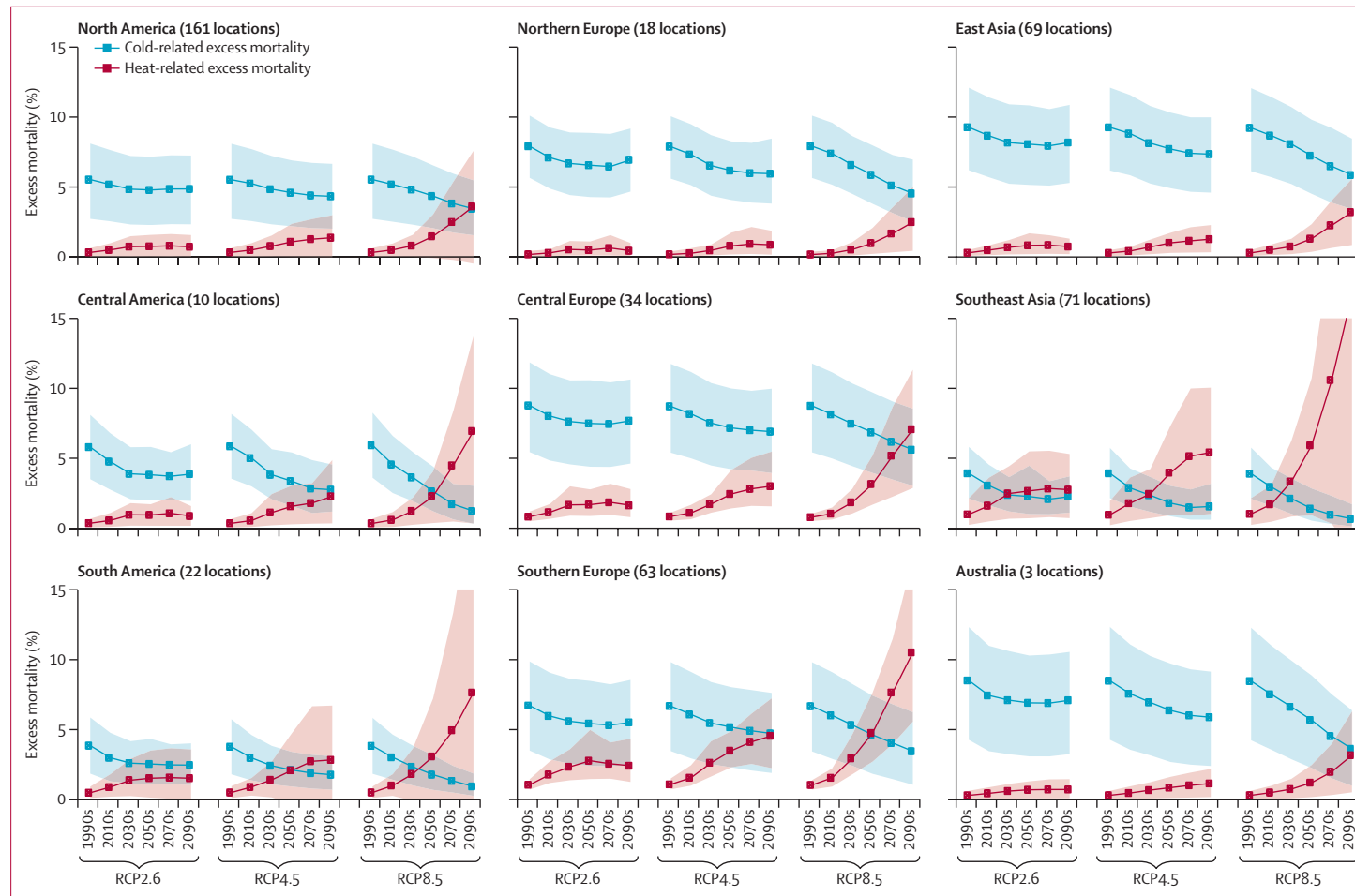
**PROJECTIONS OF
HEALTH IMPACTS**



Build resilient
populations and
systems

HEALTH IMPACT PROJECTIONS

Temperature-related mortality

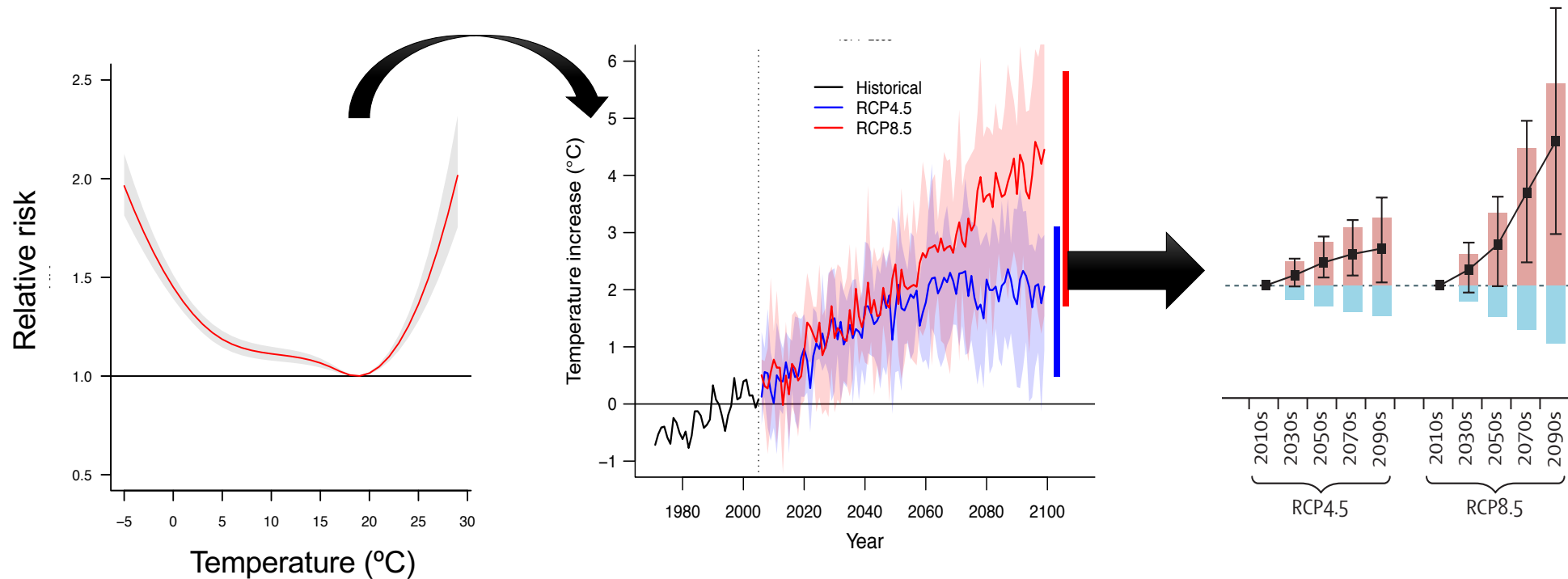


HEALTH IMPACT PROJECTIONS

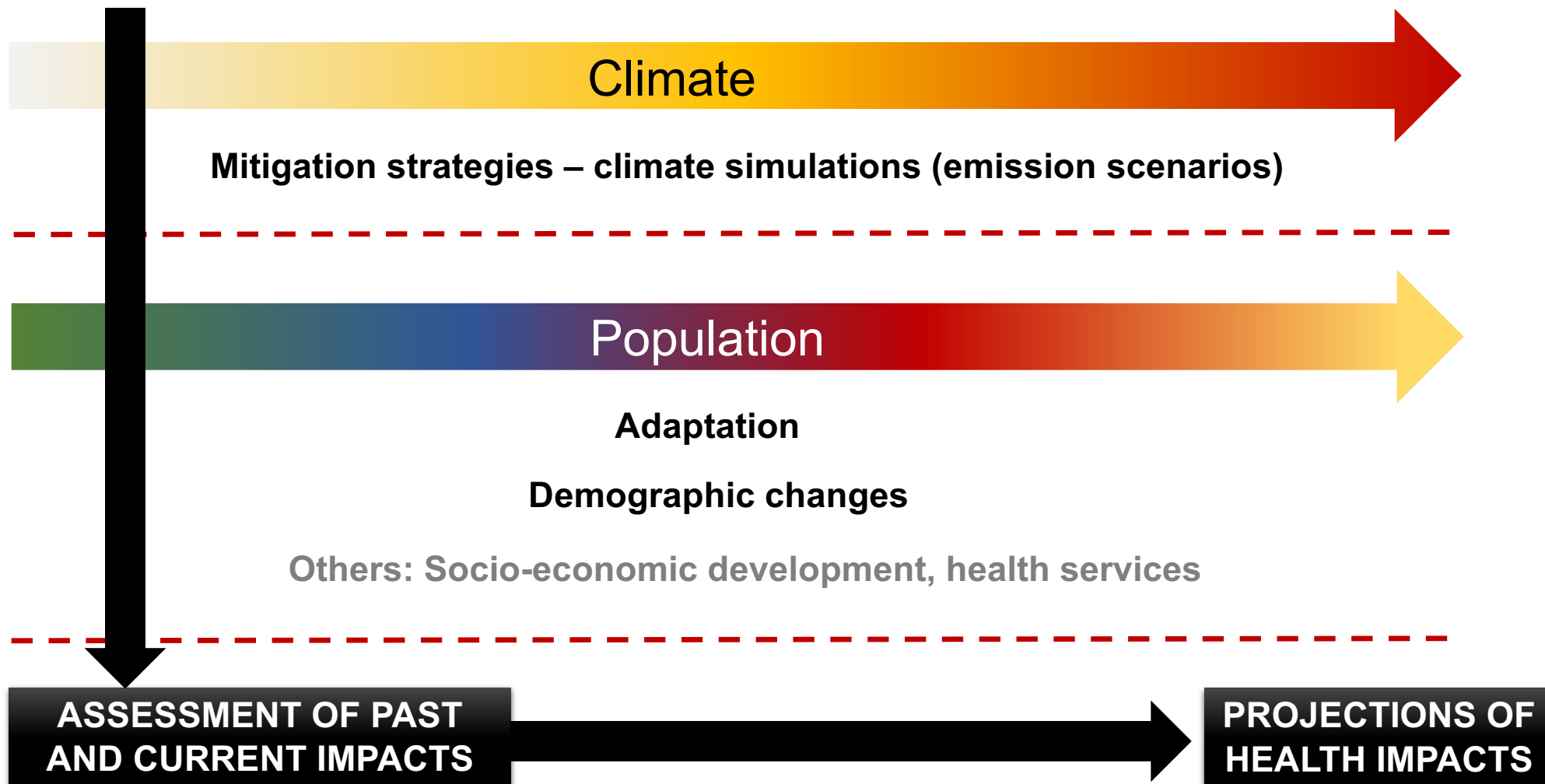
Hands-on Tutorial on a Modeling Framework for Projections of Climate Change Impacts on Health

Ana M. Vicedo-Cabrera,^a Francesco Sera,^a and Antonio Gasparrini^{a,b}

THE METHODOLOGICAL FRAMEWORK



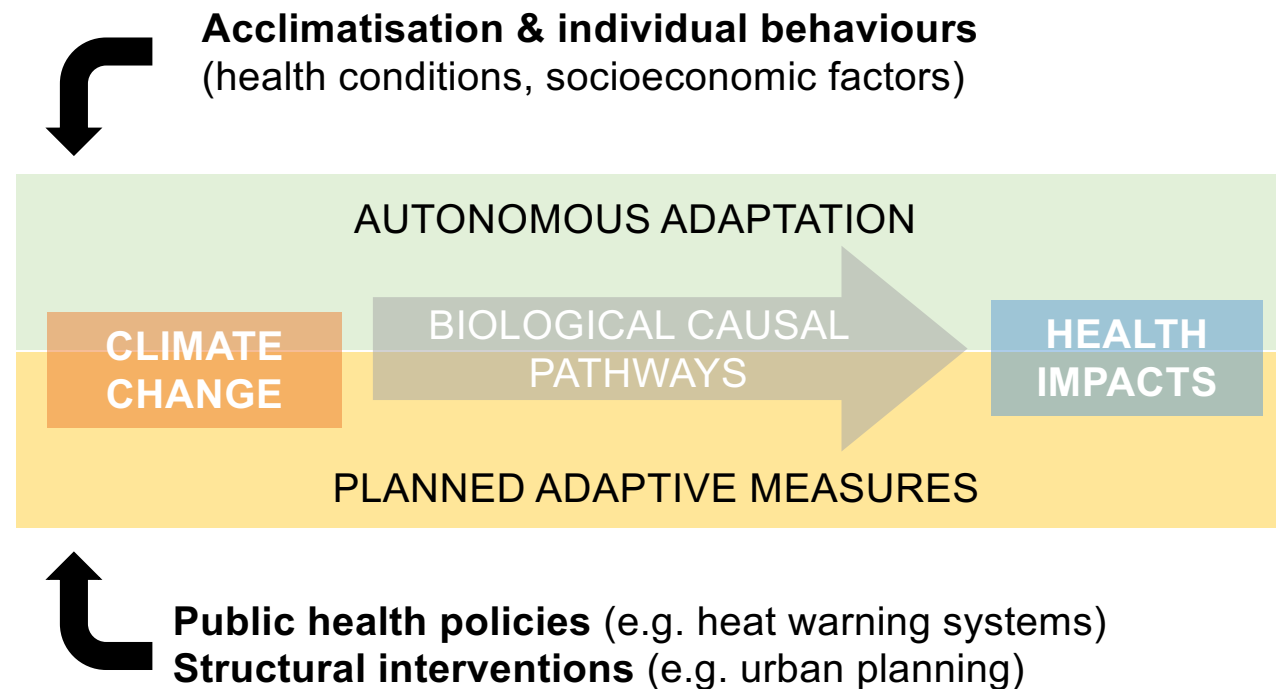
From today to future: HEALTH IMPACT PROJECTIONS



PAST & CURRENT HEALTH IMPACTS

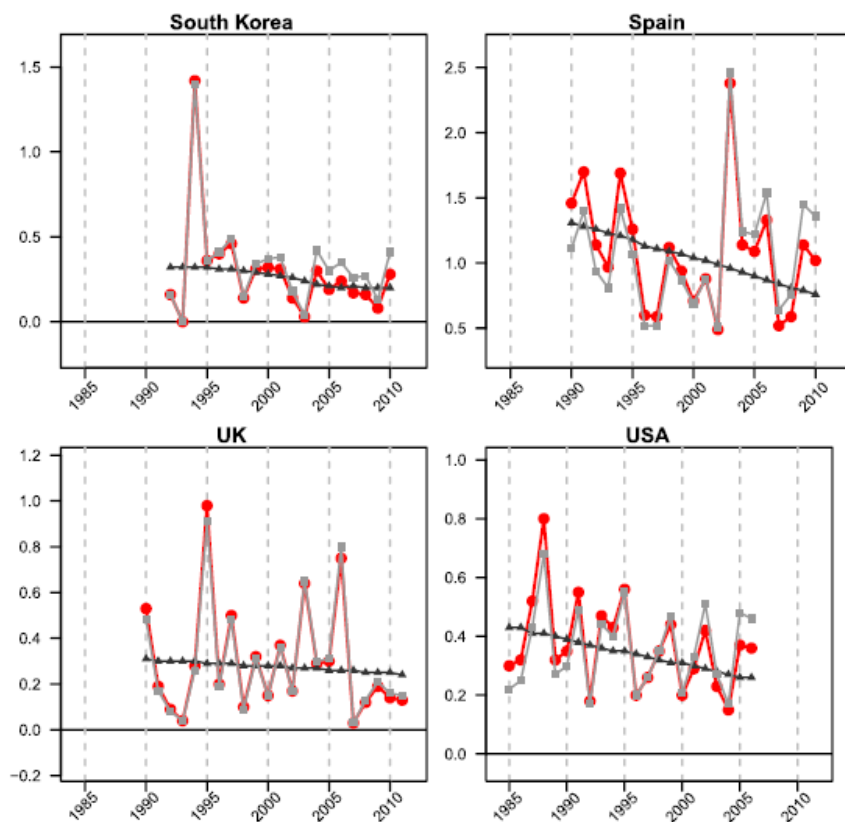
ADAPTATION – DRIVERS?

- Complex mechanisms
- Lack of data
- Different patterns across populations

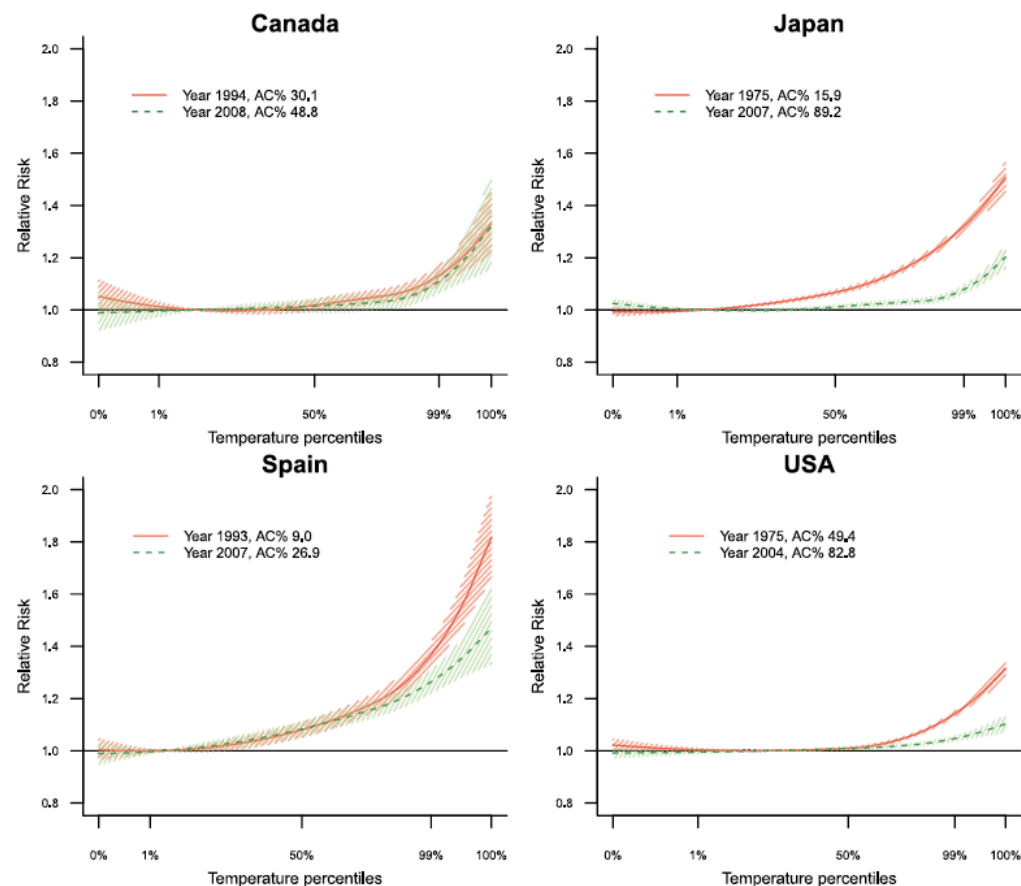


PAST & CURRENT HEALTH IMPACTS

ADAPTATION



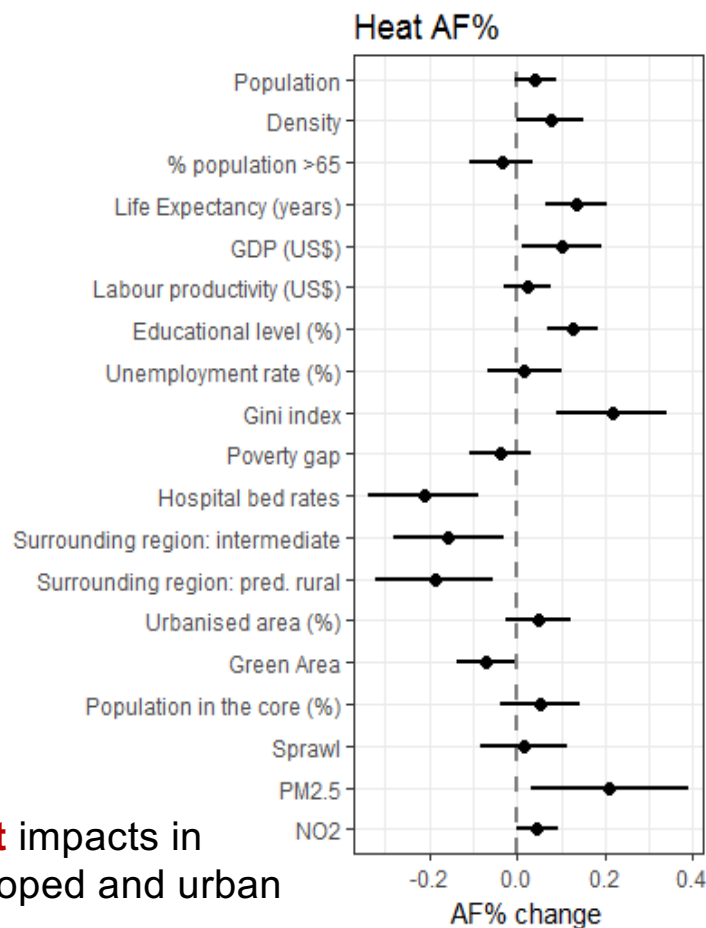
Vicedo-Cabrera et al. 2018



Sera et al. 2020

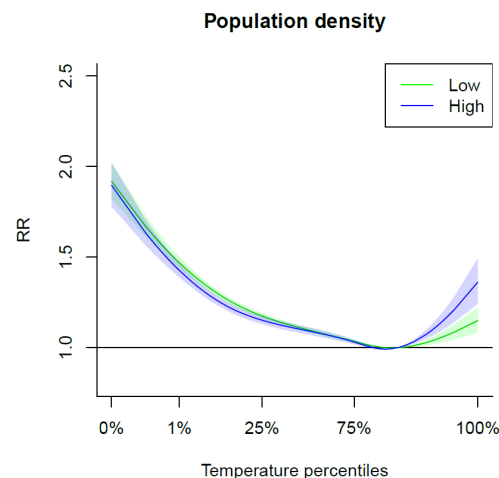
PAST & CURRENT HEALTH IMPACTS

ADAPTATION

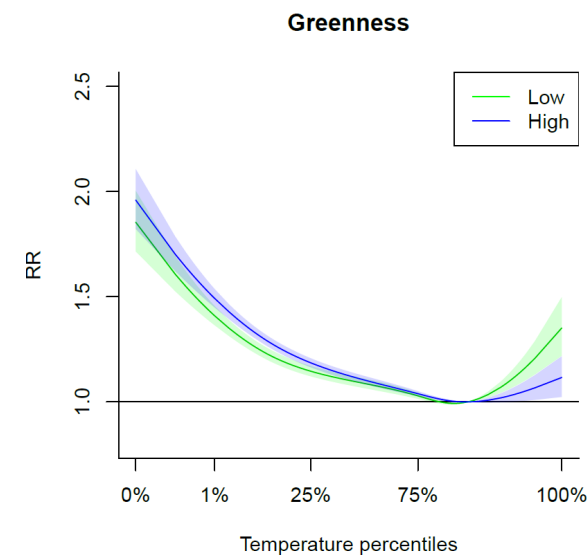


Larger **heat** impacts in more developed and urban cities

Sera et al. 2019 IJE



Higher vulnerability to **heat** in neighborhoods with **high population density** and **low greenness**

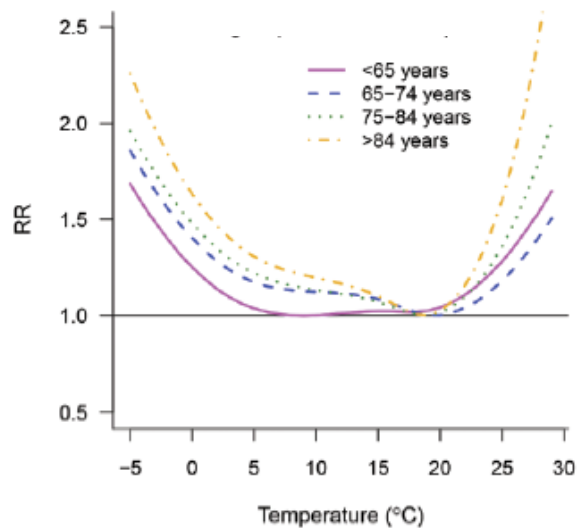


Scortichini et al. in preparation

ADVANCING ON HEALTH IMPACT PROJECTIONS

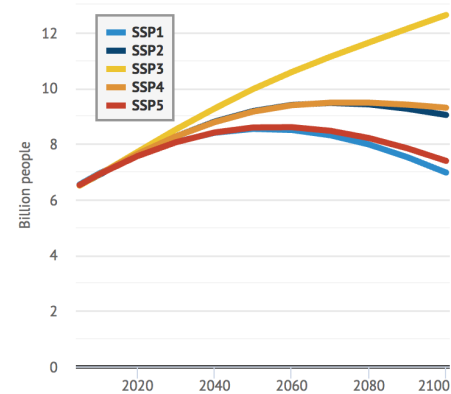
Accounting for DEMOGRAPHIC CHANGES

Age-specific relationships



Shared Socio-economic Pathways (SSP)

Global population



<https://www.carbonbrief.org/explainer-how-shared-socioeconomic-pathways-explore-future-climate-change>

ADVANCING ON HEALTH IMPACT PROJECTIONS

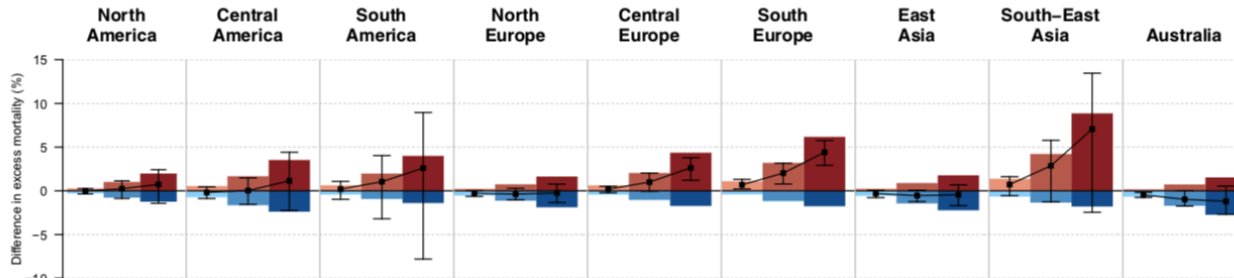
Way forward → Additional uncertainties and complexities

What about **COLD**?

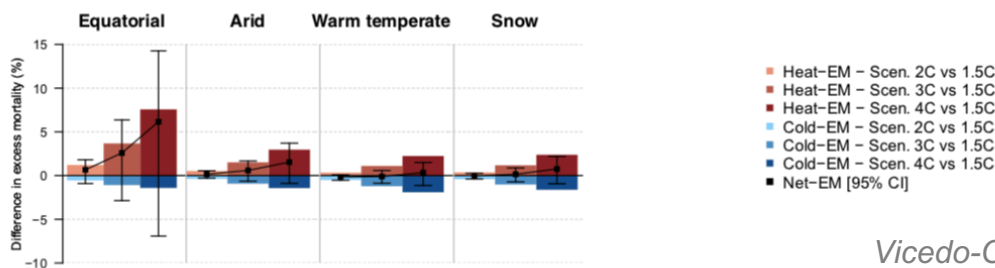
- Direct & indirect mechanisms stay the same in the future?
- Cold-driven infectious diseases (e.g. flu) under climate change scenarios
- Public health interventions (vaccination)

Projecting other **health impacts** (hospitalizations)

A – GEOGRAPHIC REGION



B – CLIMATE ZONE



Vicedo-Cabrera et al. 2018

Potential extensions



Forecasting health impacts
for heat-health warning
systems

Thank you very much




Ana M. Vicedo-Cabrera, PhD

Institute of Social and Preventive Medicine
Oeschger Center for Climate Change research
University of Bern

u^b

u^b
UNIVERSITY
OF BERN

anamaria.vicedo@ispm.unibe.ch

 @AnaVicedo9