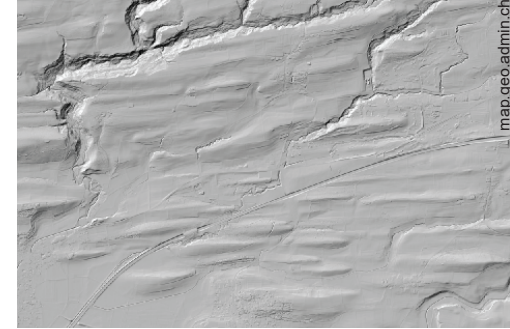
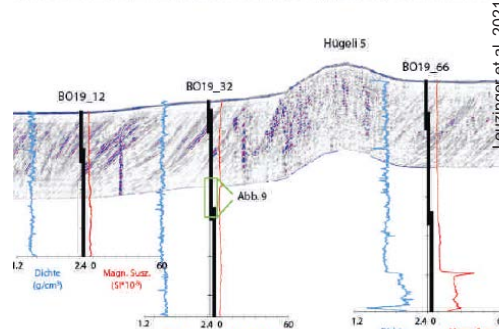


# CH-QUAT Excursion 2023 | 15–16 September 2023

## ‘Nature and humans at work’: New Quaternary research in and around Lake Constance



The CH-QUAT excursion 2023 takes place in the Thurgau/Lake Constance area and will focus on exciting new Quaternary research at the interface between archaeology, paleoecology, and geology.

The excursion stops will be guided by the involved researchers and will include the following topics:

- Archaeology and Quaternary geology of the Neolithic stone concentrations “Hügel” in the shallows of Lake Constance (U. Leuzinger, F. Anselmetti, et al.)
- New high-resolution Holocene paleoenvironmental records (Project KUMiT, O. Heiri, L. Wick, et al.) and the Pfyn archaeological site (J.-N. Haas)
- Drumlins, glacial landform analysis & glaciation history of the Rhine Glacier lobe (S. Kamleitner, et al.)
- and more

### Logistics

Start: September 15, 2023 | 9:30 Frauenfeld  
Overnight stay including dinner and breakfast  
End: ~16:00 (probably in Romanshorn)

Transportation in mini busses, gentle walks only  
Number of participants: ~15 (first come, first served)  
CHF ~75.- in double room | CHF ~100.- in single room  
(Excursion is financially supported by CH-QUAT)

**Please register via e-mail to [marius.buechi@unibe.ch](mailto:marius.buechi@unibe.ch) until July 15, 2023**