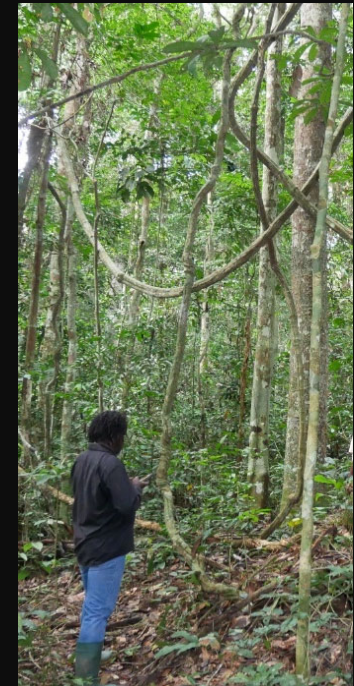


Applying convivial scholarship to Theory and Practice: Decolonising “intact forest” in Gabon

Gretchen Walters



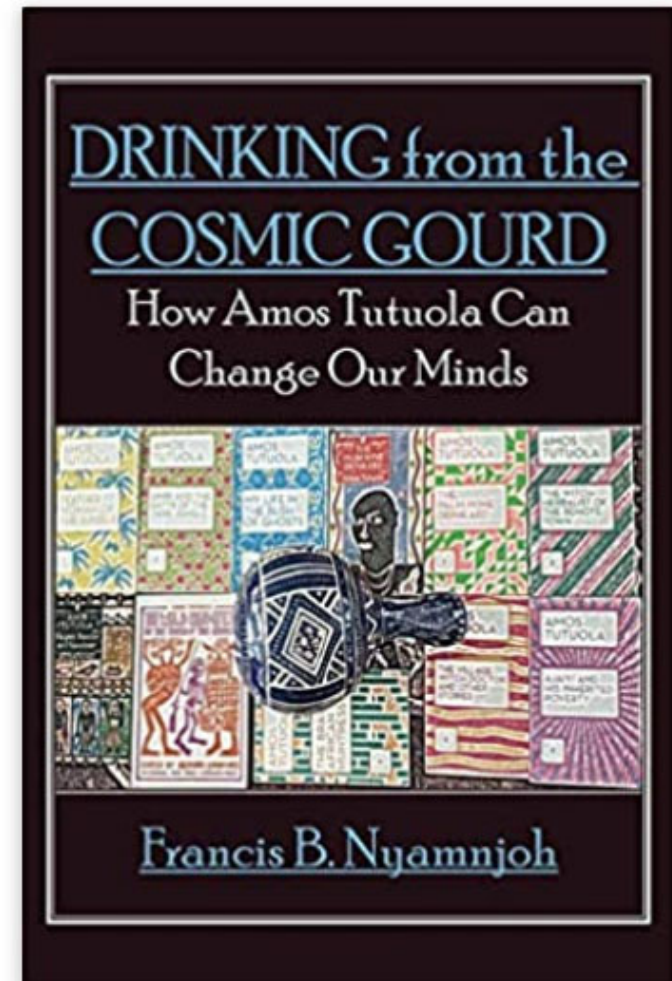
Unil

UNIL | Université de Lausanne

Institut de géographie
et durabilité

Francis Nyamnjoh's framework of convivial scholarship

- Inspired by Amos Tutuola's controversial work which employs a Yoruba world view: a character seeks to make himself better by taking the best parts of others to be a «composite being».
- Accepting that our knowledge is incomplete and so working with other knowledge systems is necessary
- Inbetweenness of African knowledge spanning: past, present, future, natural, supernatural
- Meaningful dialogue across knowledge systems
- With this approach, we can think across western, non-western, academic, non-academic ways of thinking and become "Frontier beings at the crossroads of knowledge".



Example: moving beyond a colonial view of forest history in Gabon to understand an «Intact Forest Landscape»

- 120 years of colonial maps: view of extraction, railroads, labour, taxes.
- Intact Forest Landscape Map: view from satellites of forest cover
- Massaha community's maps of the same area: biocultural view of village, sacred, natural areas.
- Together, we understand how people have lived in the Ivindo forest, influenced its structure and tree diversity, and how the landscape has been impacted by colonial and forestry policy.





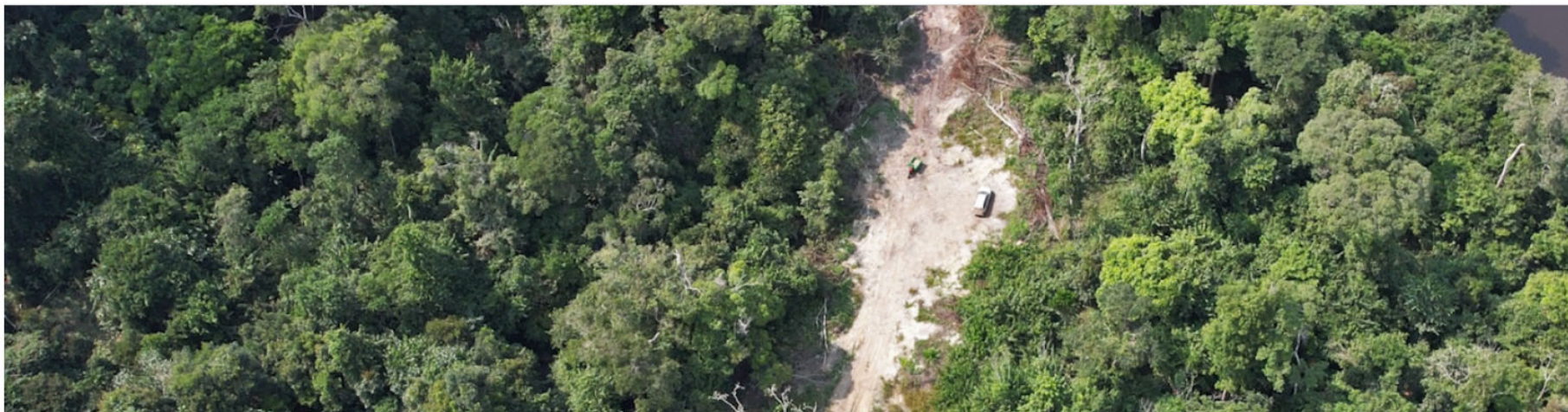
MONGABAY
NEWS & INSPIRATION FROM NATURE'S FRONTLINE

RAINFORESTS OCEANS ANIMALS ENVIRONMENT BUSINESS SOLUTIONS FOR KIDS DONATE IMPACT MORE

To see

In Gabon, a community's plea against logging paves the way for a new reserve

by Benjamin Evine-Binet on 12 April 2022 | Translated by Pénélope Vasina



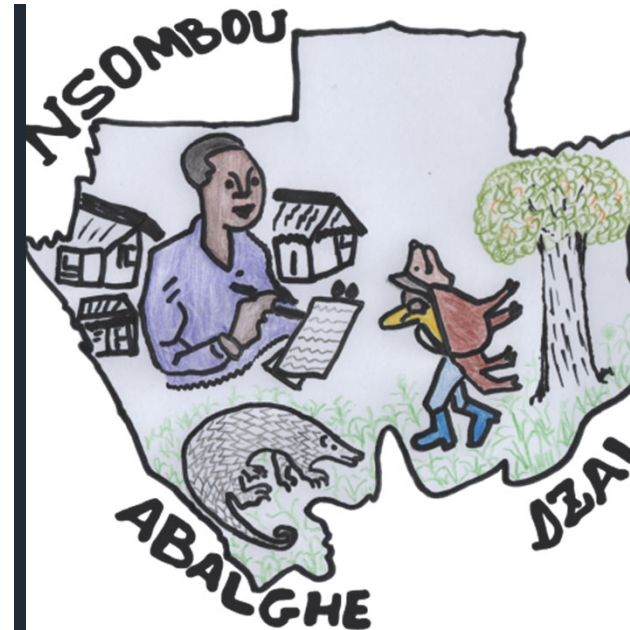
<https://news.mongabay.com/2022/04/in-gabon-a-communitys-plea-against-logging-paves-the-way-for-a-new-reserve/>



Our collaborators in alphabetical order:

H. Assatsi, Mamouaka Bayadi, S. Cheseaux, A. Cosiaux, T. Drouet, N. Engone Obiang, Emboukangoye, B., J. Epong, A. Embamenet, S. Ekazama Koto, J. Fraser, G. Froese, O. Hardy, G-R. Ibembi Moandondo, Itsetsamé, P. Ihamboua, L. Ikakaboua-Moazeonz, D. Kenfack, P. Kialo, J. Klein, G. Kotomoukaye, B.L.D. Louma, H. Mabika, D. Mbazadjia, V.P. Malingui Toukou, F. Makala, S-A. Madjamaza, J. Mako, A. Mbeng Ebele, A.S. Moimangombe, G. Mabomaya, D. Ngoapaza, C. Ngoubassékoua, T. Mahombi Mokounga, M. Réjou-Méchain, T. Stévant, J. Walker, G. Walters.

Unil
 UNIL | Université de Lausanne
 Institut de géographie
 et durabilité



ULB UNIVERSITÉ
 LIBRE
 DE BRUXELLES

 **Smithsonian**
 Tropical Research Institute


 MISSOURI
 BOTANICAL
 GARDEN

