



IPBES stakeholder engagement

Swiss IPBES Info-meeting
3 March 2015, Bern

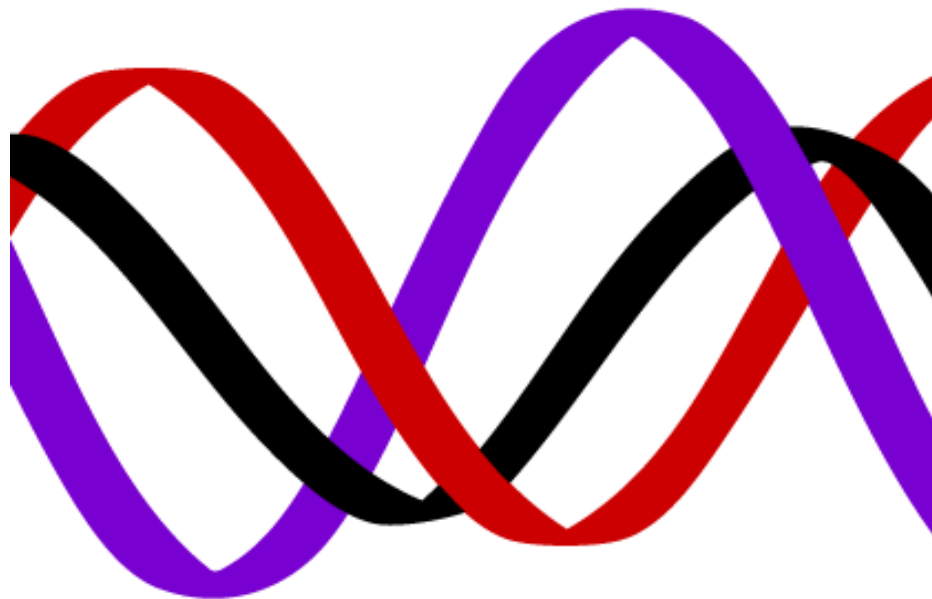
Thomas Brooks
t.brooks@iucn.org

 @IUCNscience





IUCN



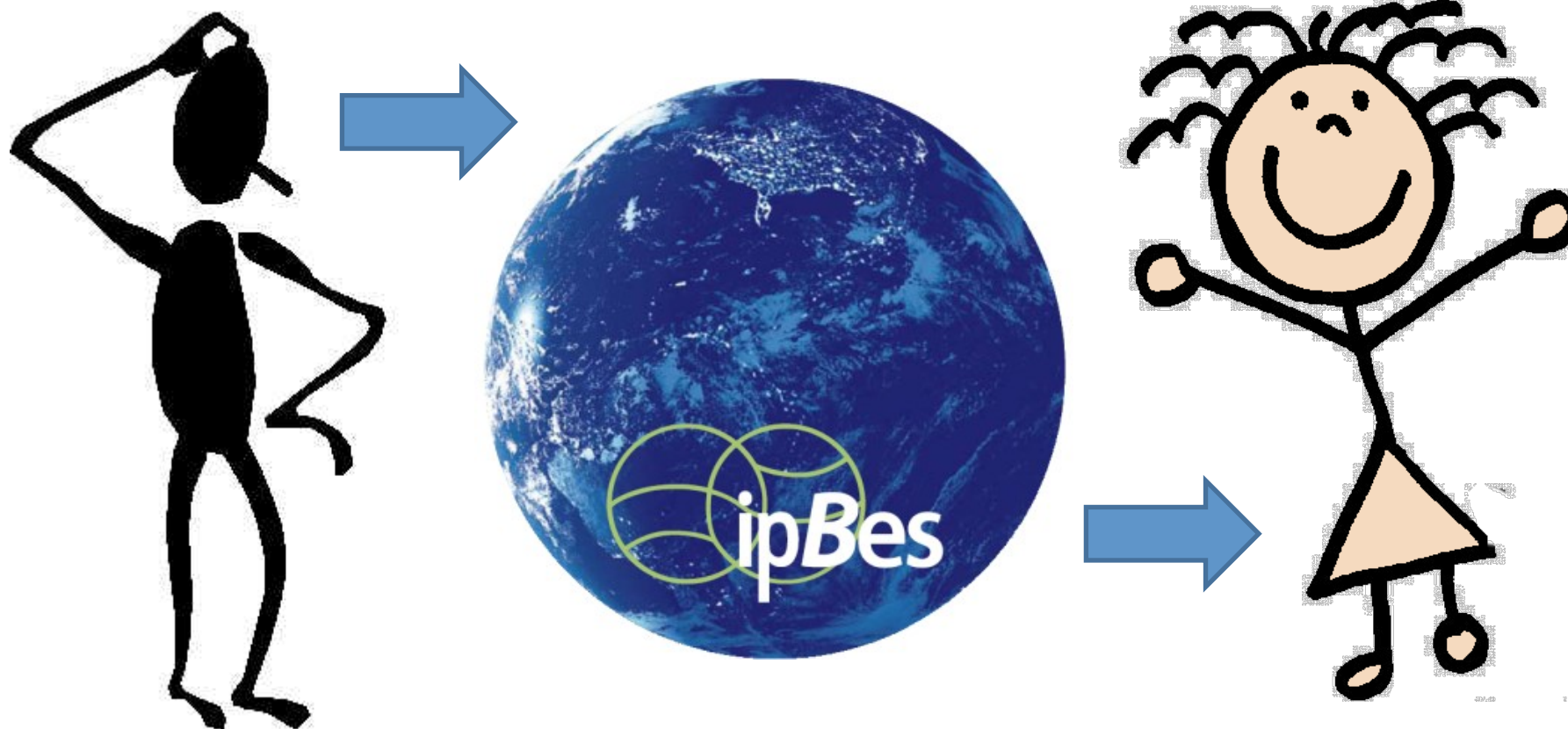
Membership: 90 governments, 123 government agencies; 102 international NGOs, 867 national NGOs

Secretariat: ~1,000 staff, HQ in Switzerland, offices in 45 countries

Commissions: ~13,000 voluntary experts in six networks:

- Commission on Ecosystem Management
- Commission on Education and Communication
- Commission on Environmental Economic and Social Policy
- Species Survival Commission
- World Commission on Environmental Law
- World Commission on Protected Areas

Who are stakeholders?





Stakeholders ≠ observers





Why stakeholder engagement?

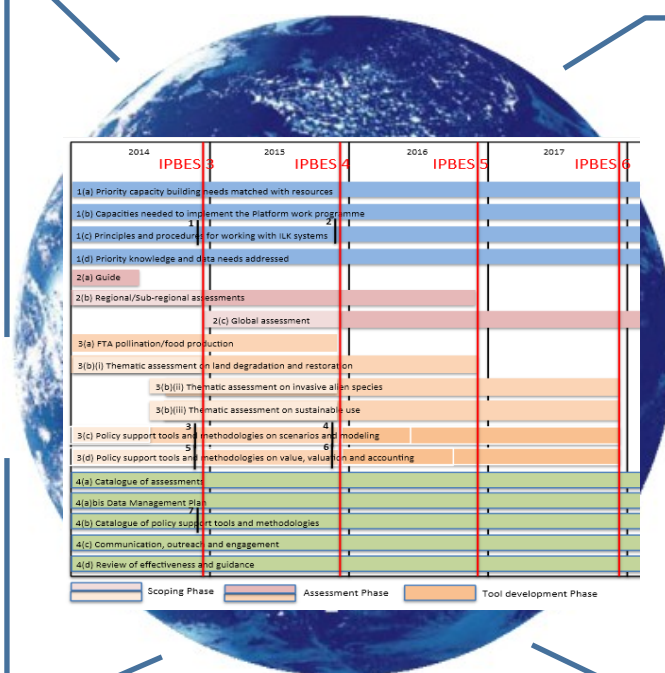


Produce assessments of existing knowledge

Catalyse the generation of new knowledge

Support policy formulation and implementation

Build capacities relevant to achieving its goal





Objectives of stakeholder engagement



Reaching out to a diversity of **potential users and providers of information** to increase the relevance and use of the Platform

Bringing **diverse perspectives** together to facilitate creativity and innovation

Attracting **scientists, such as assessment experts, and other knowledge holders** from citizen science initiatives and indigenous peoples and local communities to contribute to the Platform's deliverables

Strengthening support for the Platform's deliverables from **different regions and scientific disciplines**



Endeavouring to reach balance in the contribution of knowledge across **regions, sectors, genders and knowledge types**

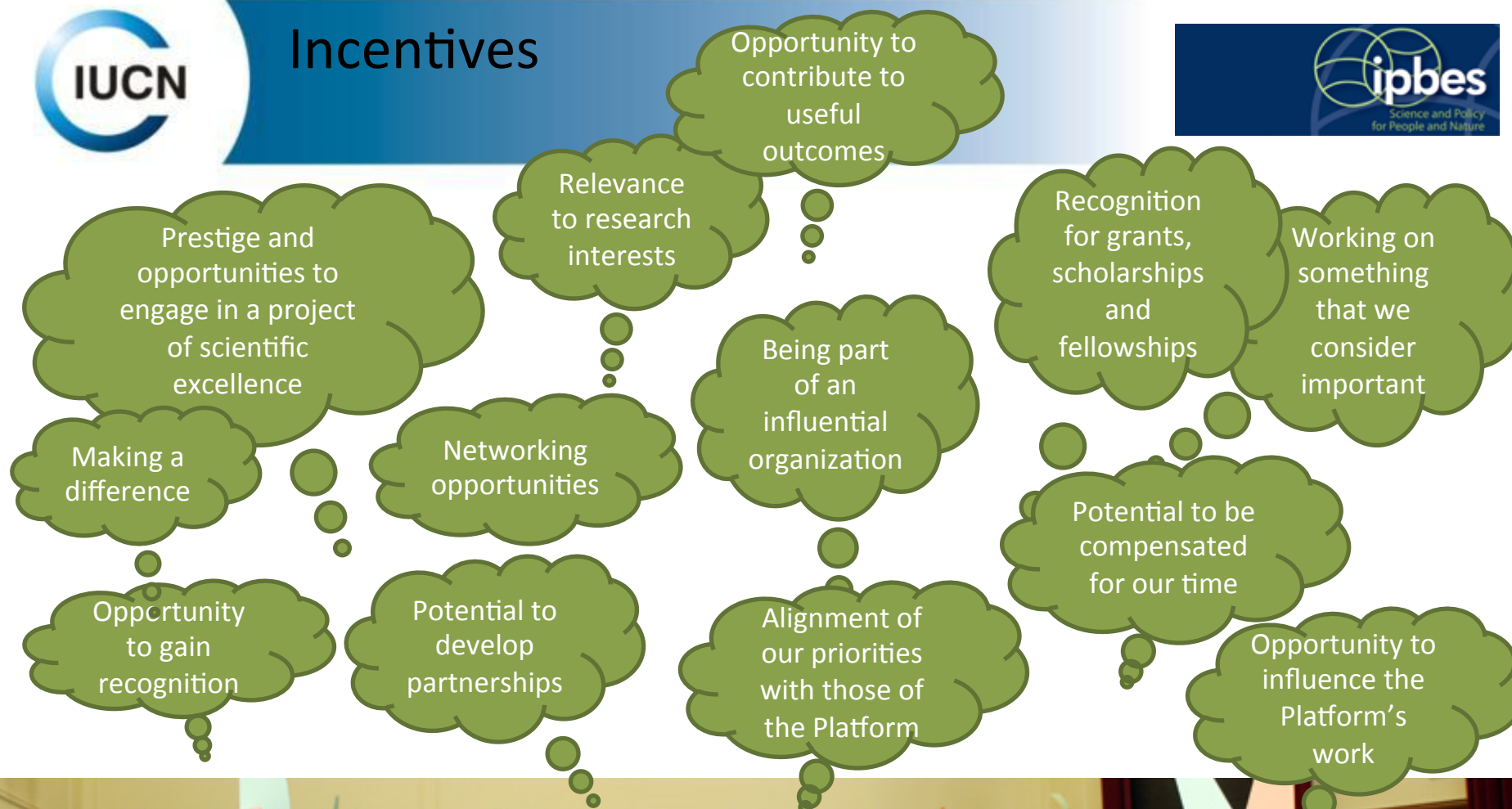
Delivering high-quality products in the context of science and knowledge to **decision-makers who are the end users** of the Platform's deliverables

Mobilizing **resources for capacity-building**, in order to contribute to the development of assessments and policy support tools and facilitate the use of policy support tools

Mobilizing **in-kind support from stakeholders** to promote the implementation and use of the Platform



Incentives





Disincentives & risks



Unequal
levels
engagement

Insufficient recognition
to collaborating
institutions

Lack of
clarity on
how to
participate

Unmet
expectations

Conflict of
interest or
dissent

Engaging in a process
with regard to which
they have not been
involved in developing
the questions

Participation
fatigue

Heavy time
commitment

Insufficient
or uncertain
funding





Activities, timeline & budget



<i>Actions</i>	<i>Timeline</i>	<i>Indicative budget</i>
Identification of stakeholders	March–May 2015	N/A
Needs analysis	June–July 2015	N/A
How-to guides and translations	March–June 2015	\$35,000 for 2015
Fact sheets and translations regarding knowledge generation and capacity-building	May–July 2015	\$70,000 for 2015
Hard-to-reach stakeholders	Ongoing	Part of the budget for deliverable 1 (c)
Networks and hubs	Ongoing	N/A
Social media	Ongoing	N/A
Information and communications technology tools (online file sharing and video conferencing tools)	Jan 2015–Dec 2018	Online file sharing and video conferencing for 500 users: \$130,000 for four years
Stakeholder events	One or two days prior to each Plenary	Estimated cost of venue per day: \$38,000
Annual survey	November each year	N/A



Evaluation



<i>Indicators for successful stakeholder engagement</i>	<i>Description</i>
Commitment to stakeholder engagement	<ul style="list-style-type: none">• Development of a strategy and an implementation plan• Evidence of consultations with stakeholders• Evidence of clear and accurate policies and processes explaining how stakeholders can get involved and in which areas
Capacity to address challenges	<ul style="list-style-type: none">• References to obstacles to stakeholder engagement and the steps planned to surmount them (e.g., hard-to-reach stakeholders, language or cultural barriers, diverse agendas or interests, etc.)
Extent of engagement	<ul style="list-style-type: none">• Metrics assessing engagement (e.g., number of nominations, peer review comments, participants, fellowships, etc.)
Diversity	<ul style="list-style-type: none">• Metrics assessing representation of stakeholders from different countries, regions, disciplines, etc.
Evidence of outputs and impacts	<ul style="list-style-type: none">• Evidence of the relation between the purpose of the engagement and the expected outcomes• Evidence of the achieved impacts
Opportunities for two-way communication	<ul style="list-style-type: none">• Calls for input on issues related to stakeholder engagement• Surveys to provide feedback on the engagement• Evidence of stakeholder issues and concerns being addressed



How will it work?



“The stakeholder engagement strategy is **implemented and operationalized by the secretariat**, subject to the availability of resources, working under the supervision of the Bureau and the Plenary and in collaboration with the Multidisciplinary Expert Panel. The Platform encourages the **self-organization of an inclusive, open-ended network of stakeholders** representing their diversity, working primarily on a virtual basis. Collaboration between the Platform and the network will be guided by the stakeholder engagement strategy. A strategic partnership between the Platform and the network will specify the arrangements for this collaboration and will be subject to the approval of the Plenary.”



What is an inclusive, open-ended network?



- ☐ Transparently facilitated collaborative entity
- ☐ Diverse community
- ☐ Membership is open to all relevant stakeholders, evolving through time
- ☐ Organised and led by stakeholders
- ☐ Collaboration with the secretariat
- ☐ Supports and brings added value to IPBES activities





Possibilities for structuring the inclusive, open-ended network



- ❑ Eligibility criteria for the network: self-registration
- ❑ Establishing a network committee:
 - Nomination process: self-nomination
 - Election criteria: open, online election of candidates from among registered stakeholders
 - Duration of term: e.g., three years, renewable once
 - Gender and regional balance: two seats (one female & one male) could be allocated for each of five UN regions
 - Presence of different disciplines and knowledge: the process will strive to elect a network committee which balances across different disciplines and knowledge with additional two seats for Indigenous and local people



Operationalisation of the inclusive, open-ended network



- ☐ Establishment of a registry
- ☐ Mobilise to bring potential stakeholders into the inclusive open-ended network, starting with existing networks and structures
- ☐ Secure stakeholder support unit through IPBES accepting offers of in-kind support for collaborative partnership
- ☐ Development of Terms of Reference for network committee and stakeholder support unit
- ☐ Establish election process
- ☐ Election of the network committee
- ☐ Strengthen communication infrastructure for inclusive open-ended network, building on existing structures
- ☐ Resource mobilisation to deliver the full potential of the inclusive open-ended network



Googlegroups



File Edit View History Bookmarks Tools Help

IPBES Engagement Networ... x +

https://groups.google.com/forum/#!aboutgroup/ipbes-engagement-network

Search

Google Search for topics

+Thomas

Groups

About Group

Group name	IPBES Engagement Network		
Description	The IPBES Engagement Network brings together persons and groups interested in the Intergovernmental Science-Policy Platform on Biodiversity and Ecosystem Service to share information on IPBES & ways to engage with it, post relevant news, articles and links, share experiences and exchange opinions.		
Group email	ipbes-engagement-network@googlegroups.com Contact owner		
Group feeds	15 new messages at a time 50 new messages at a time	RSS RSS	Atom Atom
	15 new topics at a time 50 new topics at a time	RSS RSS	Atom Atom
Members	275		
Language	English (United Kingdom)		
Access	Anyone can view content. Anyone can join. Only members can post. All posts are held for moderation. Only members can view the list of members.		

<https://groups.google.com/forum/#!aboutgroup/ipbes-engagement-forum>