

ipbes

# IPBES

## Thematic Assessment on Land Degradation & Restoration



[www.ipbes.net](http://www.ipbes.net)

UN   
environment

  
United Nations  
Educational, Scientific and  
Cultural Organization

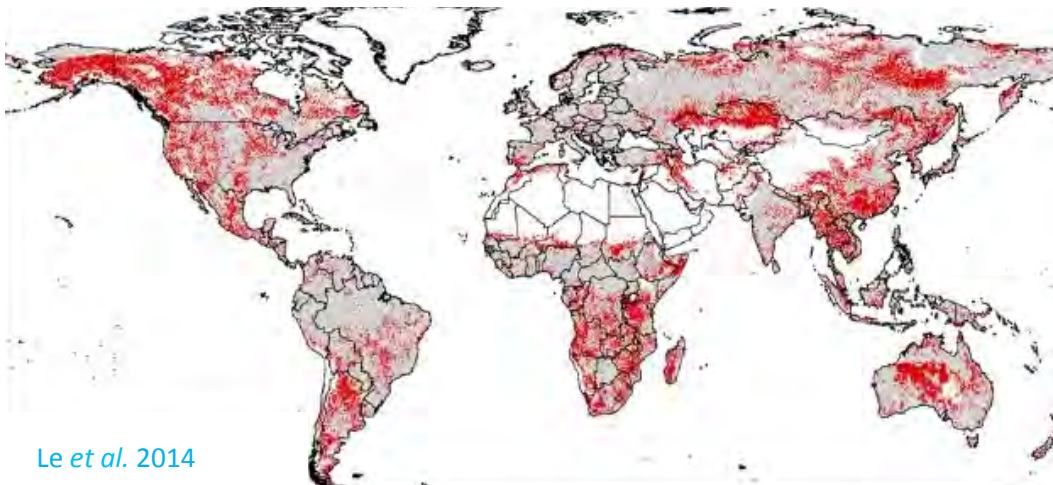


Food and Agriculture  
Organization of the  
United Nations

  
UN  
DP  
empowered lives.  
resilient nations

## Definitions

- **Degraded land** State that results from the persistent decline or loss of biodiversity/NCP that cannot fully recover unaided within decades. Major driver of poverty, migrations.
- **Restoration** Intentional activities towards recovery of ecosystems from a degraded state.



## Purpose

- Identify and synthesize key information on land *degradation* (→ awareness)
- Identify and synthesize key information on *restoration* (→ solutions)
- Identify *gaps*
- → Assessment Report



# Background

- Uses existing knowledge and literature
- Draws from diverse knowledge systems
- Global; terrestrial
- Domains:
  - Croplands
  - Forested lands
  - Rangelands
  - Wetlands
- IPBES-2: scoping approved
- IPBES-3: undertaking approved



# Structure

1. Be  
from  
de  
restor

2  
per

3. D  
d

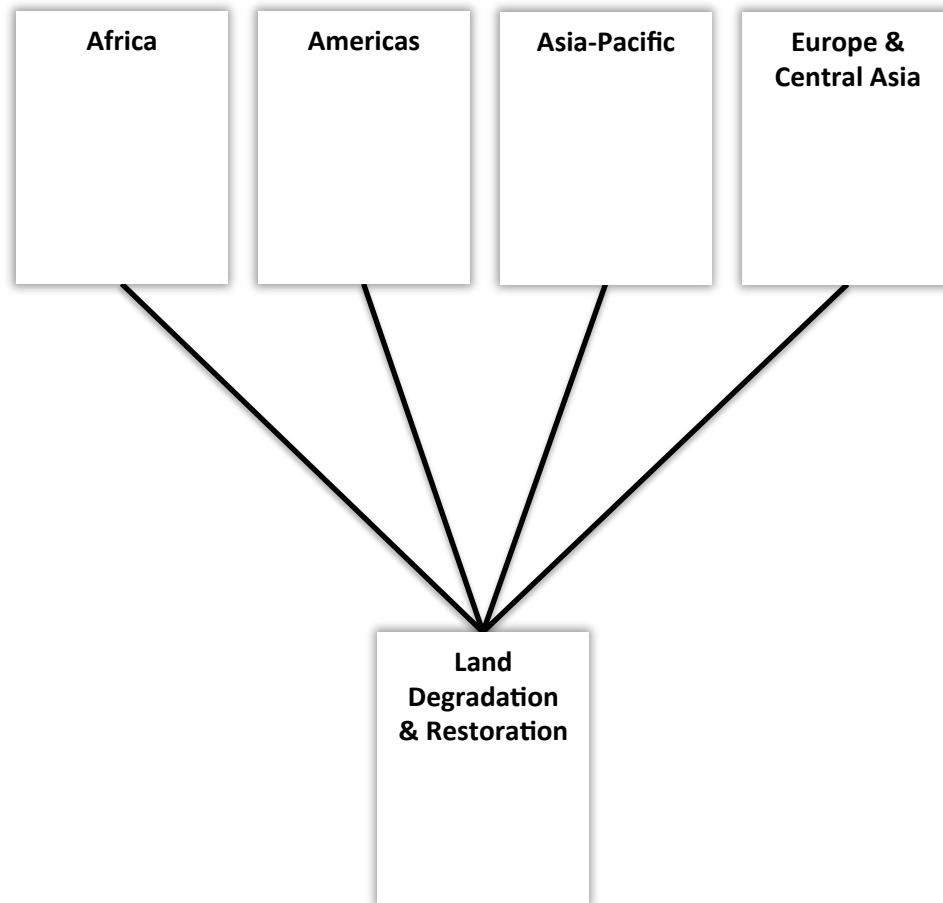
4. S  
LD  
cha

**Summary for  
Policymakers**

**8. Decision support to  
address land  
degradation and  
support restoration of  
degraded land**

≈ ECA 6

# Treatment of LDR in regional assessments



- Definitions approved by IPBES Plenary (as per scoping report)
- Regional assessments to address LDR, substantially; in tandem
- Indicators of state of degradation/restoration; quality of life → exchange encouraged

## Context



Convention on  
Biological Diversity



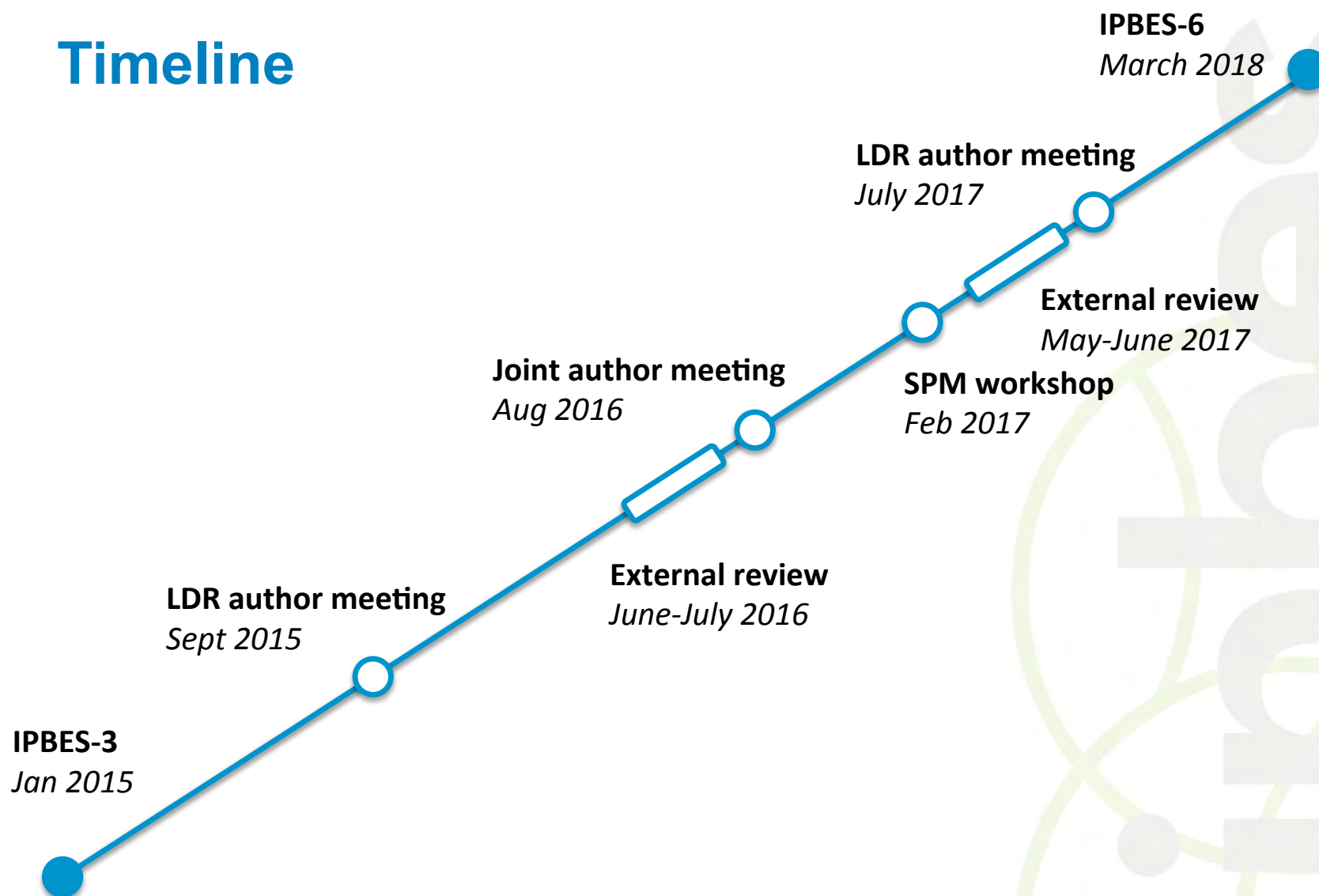


# LDRA Team

- Co-chairs: Bob Scholes and Luca Montanarella
- 17 CLAs; 60 LAs (half liaison experts); 7 fellows; 16 review editors; contributing authors
- TSU: Anastasia Brainach



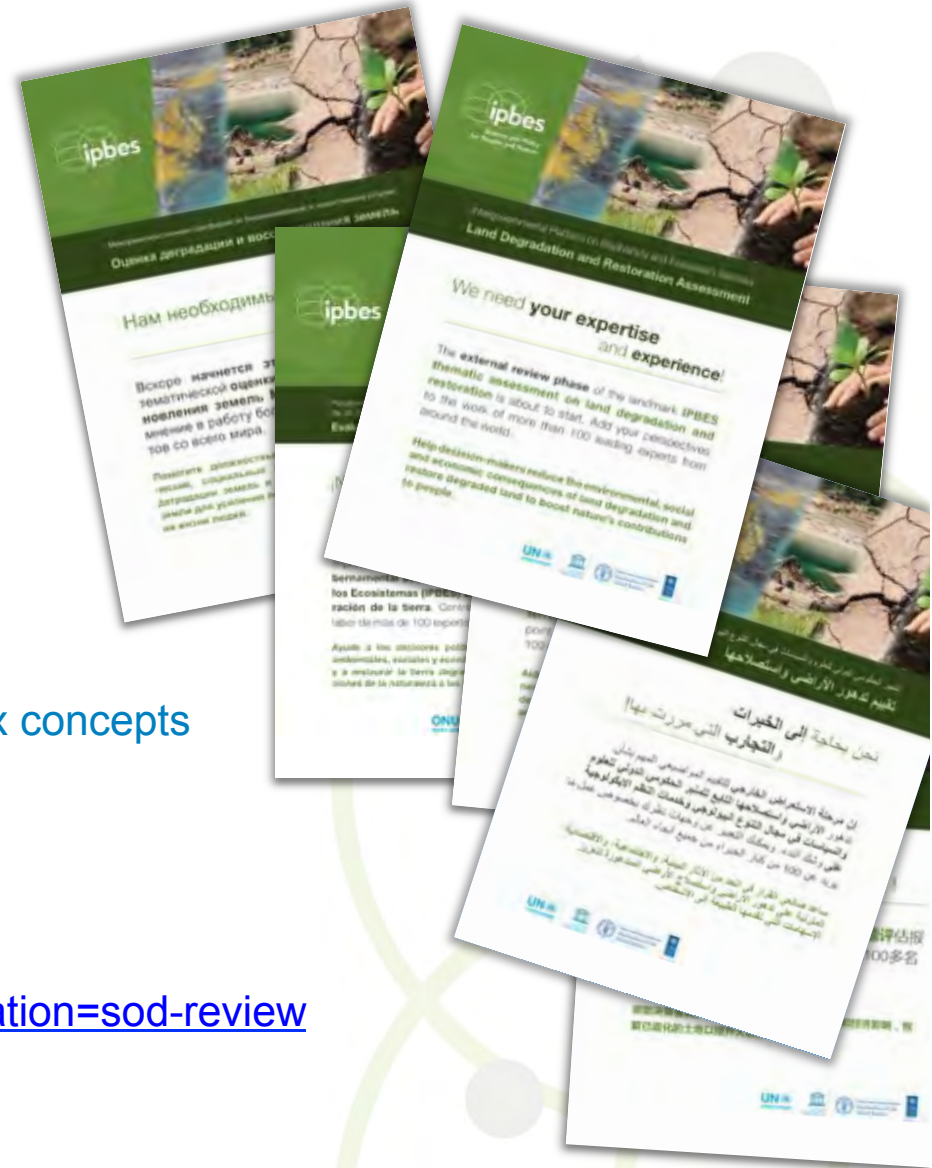
# Timeline





# Review

- 1<sup>st</sup> external review
  - 2200 individual comments
  - Missed publications
  - Overlap between chapters
- What's needed
  - Recent relevant publications missed
  - Suggestions for graphics to relay complex concepts
  - Stronger focus on policy-related chapters
- To take part:
  - Register:  
<http://www.ipbes.net/user/register?destination=sod-review>
  - Apply: [www.ipbes.net/sod-review](http://www.ipbes.net/sod-review)
  - Info: <https://youtu.be/tnx8nxDIId08>



ipbes

# IPBES

## Thematic Assessment on Land Degradation & Restoration



[www.ipbes.net](http://www.ipbes.net)

UN   
environment

  
United Nations  
Educational, Scientific and  
Cultural Organization



Food and Agriculture  
Organization of the  
United Nations

  
UN  
DP  
empowered lives.  
resilient nations